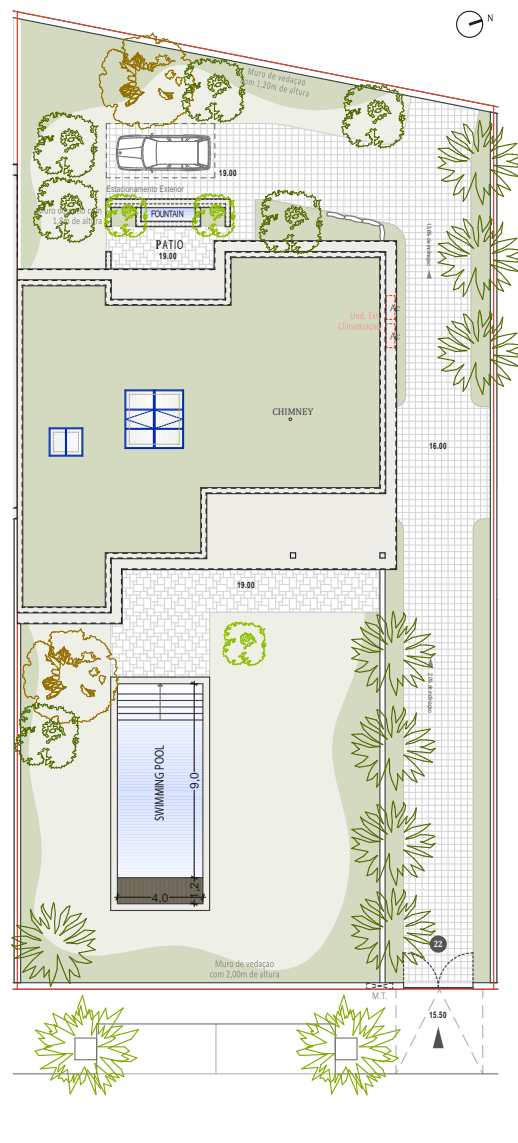




QUINTA DE FARO
— PRIVATE LUXURY VILLAS —
ALGARVE



Kitchen equipment is not contractual. Their position is indicative. Dimensions and areas are given subject to technical construction and execution requirements.
The fallout from false ceilings, soffits and pipes are not systematically shown.
The thickness of the insulation will be determined by the technical execution study and therefore the data in this plan are only indicative.

Co-Developer :

MJ Développement
55 Avenue d'Espagne
64600 ANGLET - FRANCE
Tel: +33 5 59 03 13 00

MJ DÉVELOPPEMENT
PROMOTEUR CONSTRUCTEUR

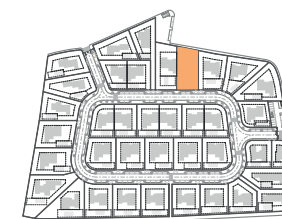
Serip Groupe
2, avenue de la Liberté
83120 Sainte-Maxime - FRANCE


SERIP GROUPE

SALES PLAN

VILLA N°22 DOUBLE STOREY

SITE PLAN



TOTAL INTERIOR LIVING AREA 328.8 m²

GROUND FLOOR 167 m²

Living	40.9 m ²
Dining room	17.7 m ²
Kitchen	14.4 m ²
Office	6.2 m ²
Storeroom	5.1 m ²
Ensuite Bedroom 1	21.2 m ²
Ensuite Bedroom 2	20 m ²
Dressing Ensuite Bedroom 2	3 m ²
Ensuite Bedroom 3	26.7 m ²
Dressing Ensuite Bedroom 3	4.4 m ²
Guest toilet	1.9 m ²
Lobby, Hallway	5.5 m ²

BASEMENT 161.8 m²

Hallway	17.2 m ²
Ensuite Bedroom 4	17.7 m ²
Laundry	6.9 m ²
Gym, Hammam	21.6 m ²
Wine Cellar	10.2 m ²
Garage	88.2 m ²
Technical room swim Pool	20.9 m ²

TOTAL EXTERIOR AREA 88.1 m²

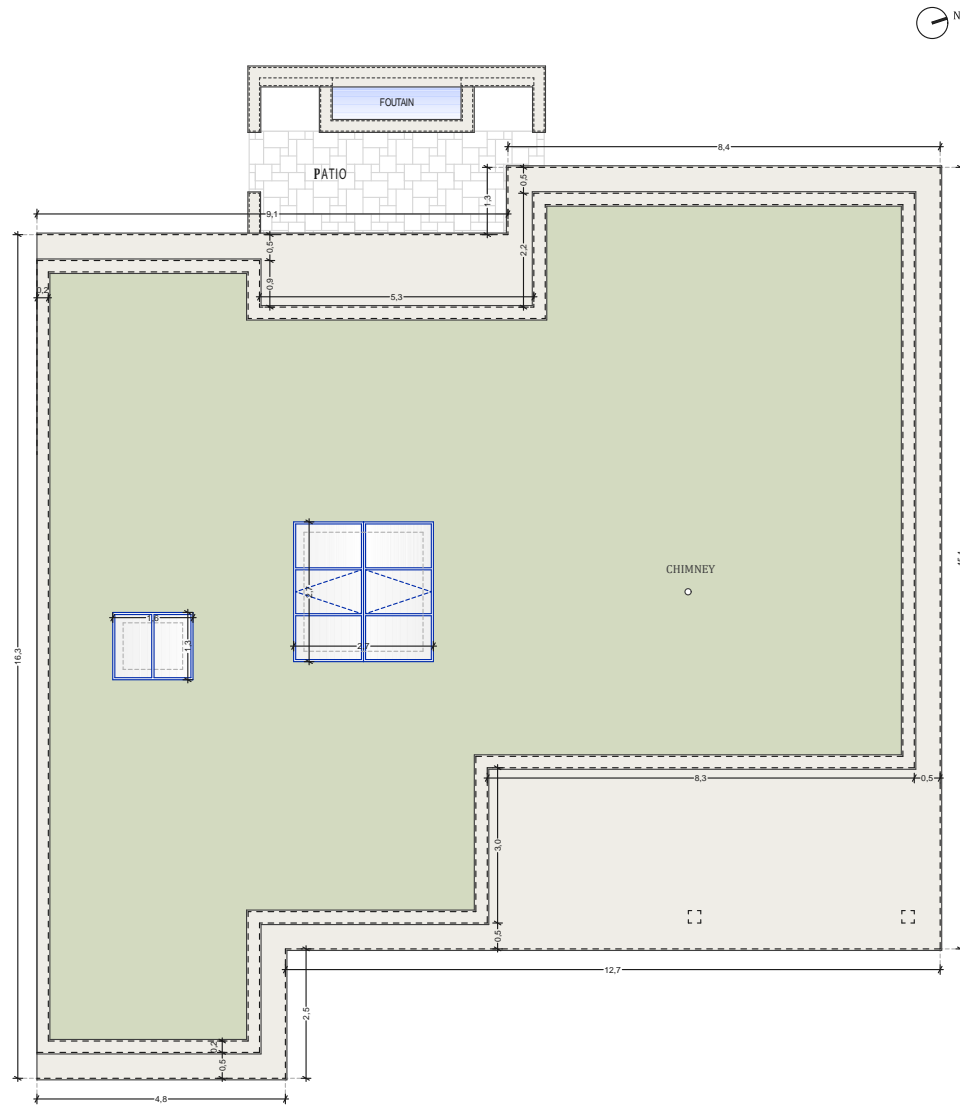
Patio/Fountain	22.7 m ²
Covered terrace	24.6 m ²
Pool Deck	4.8 m ²
Swimming pool	36 m ²

TOTAL AREA 416.9 m²

Plot of Land	941.3 m ²
Altimetry	19



QUINTA DE FARO
— PRIVATE LUXURY VILLAS —
ALGARVE



Kitchen equipment is not contractual. Their position is indicative. Dimensions and areas are given subject to technical construction and execution requirements.
The fallout from false ceilings, soffits and pipes are not systematically shown.
The thickness of the insulation will be determined by the technical execution study and therefore the data in this plan are only indicative.

Co-Developer :

MJ Développement
55 Avenue d'Espagne
64600 ANGLET - FRANCE
Tel: +33 5 59 03 13 00

MJ DÉVELOPPEMENT
PROMOTEUR CONSTRUCTEUR

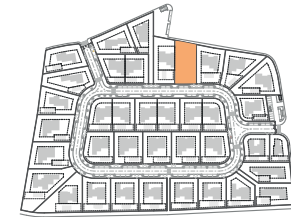
Serip Groupe
2, avenue de la Liberté
83120 Sainte-Maxime - FRANCE


SERIP GROUPE

SALES PLAN

VILLA N°22 DOUBLE STOREY

FLOOR COVERING PLAN



TOTAL INTERIOR LIVING AREA 328.8 m²

GROUND FLOOR 167 m²

Living	40.9 m ²
Dining room	17.7 m ²
Kitchen	14.4 m ²
Office	6.2 m ²
Storeroom	5.1 m ²
Ensuite Bedroom 1	21.2 m ²
Ensuite Bedroom 2	20 m ²
Dressing Ensuite Bedroom 2	3 m ²
Ensuite Bedroom 3	26.7 m ²
Dressing Ensuite Bedroom 3	4.4 m ²
Guest toilet	1.9 m ²
Lobby, Hallway	5.5 m ²

BASEMENT 161.8 m²

Hallway	17.2 m ²
Ensuite Bedroom 4	17.7 m ²
Laundry	6.9 m ²
Gym, Hammam	21.6 m ²
Wine Cellar	10.2 m ²
Garage	88.2 m ²
Technical room swim Pool	20.9 m ²

TOTAL EXTERIOR AREA 88.1 m²

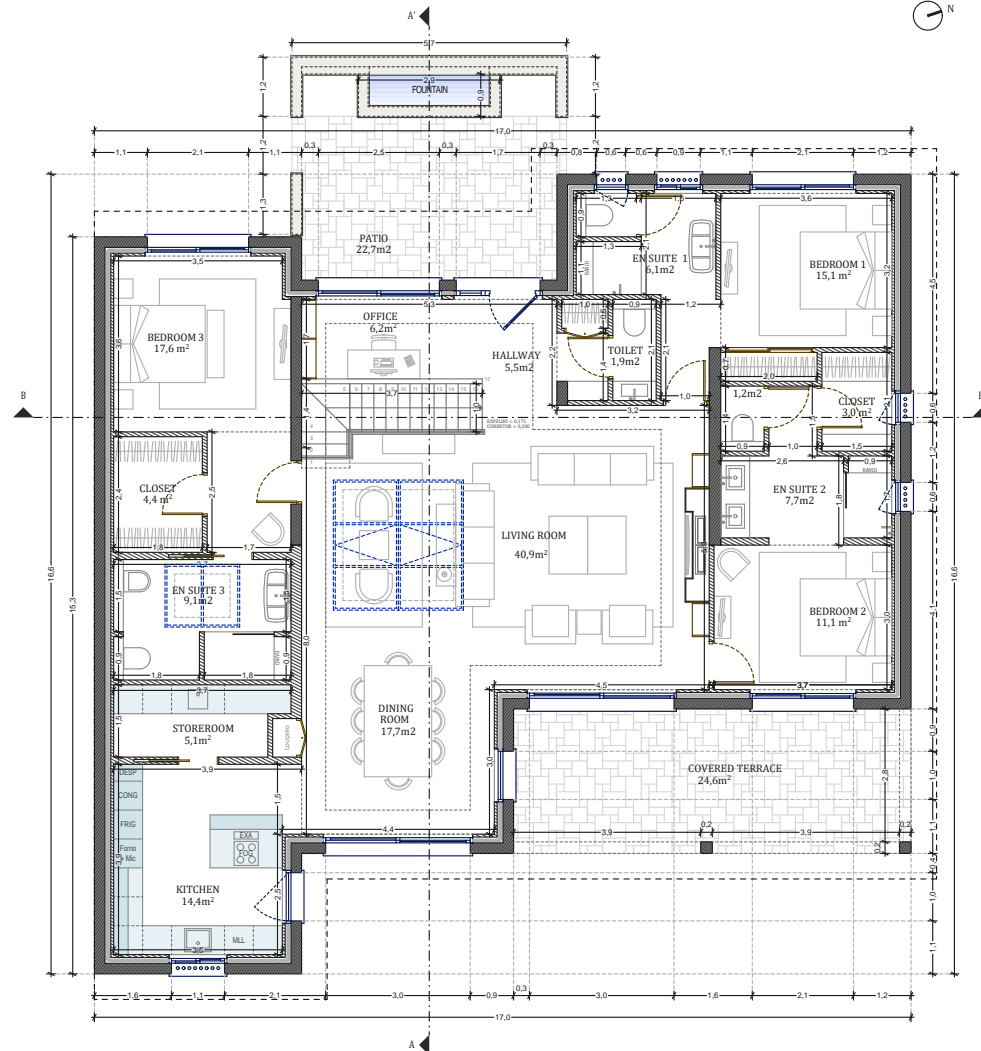
Patio/Fountain	22.7 m ²
Covered terrace	24.6 m ²
Pool Deck	4.8 m ²
Swimming pool	36 m ²

TOTAL AREA 416.9 m²

Plot of Land	941.3 m ²
Altimetry	19



QUINTA DE FARO
PRIVATE LUXURY VILLAS
ALGARVE



Kitchen equipment is not contractual. Their position is indicative. Dimensions and areas are given subject to technical construction and execution requirements. The fallout from false ceilings, soffits and pipes are not systematically shown. The thickness of the insulation will be determined by the technical execution study and therefore the data in this plan are only indicative.

Co-Developer :

MJ Développement
55 Avenue d'Espagne
64600 ANGLÈT - FRANCE
Tel: +33 5 59 03 13 00

MJ DÉVELOPPEMENT
PROMOTEUR CONSTRUCTEUR

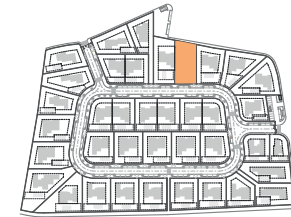
Serip Groupe
2, avenue de la Liberté
83120 Sainte-Maxime - FRANCE


SERIP GROUPE

SALES PLAN

VILLA N°22 DOUBLE STOREY

GROUND FLOOR



TOTAL INTERIOR LIVING AREA 328.8 m²

GROUND FLOOR 167 m²

Living	40.9 m ²
Dining room	17.7 m ²
Kitchen	14.4 m ²
Office	6.2 m ²
Storeroom	5.1 m ²
Ensuite Bedroom 1	21.2 m ²
Ensuite Bedroom 2	20 m ²
Dressing Ensuite Bedroom 2	3 m ²
Ensuite Bedroom 3	26.7 m ²
Dressing Ensuite Bedroom 3	4.4 m ²
Guest toilet	1.9 m ²
Lobby, Hallway	5.5 m ²

BASEMENT 161.8 m²

Hallway	17.2 m ²
Ensuite Bedroom 4	17.7 m ²
Laundry	6.9 m ²
Gym, Hammam	21.6 m ²
Wine Cellar	10.2 m ²
Garage	88.2 m ²
Technical room swim Pool	20.9 m ²

TOTAL EXTERIOR AREA 88.1 m²

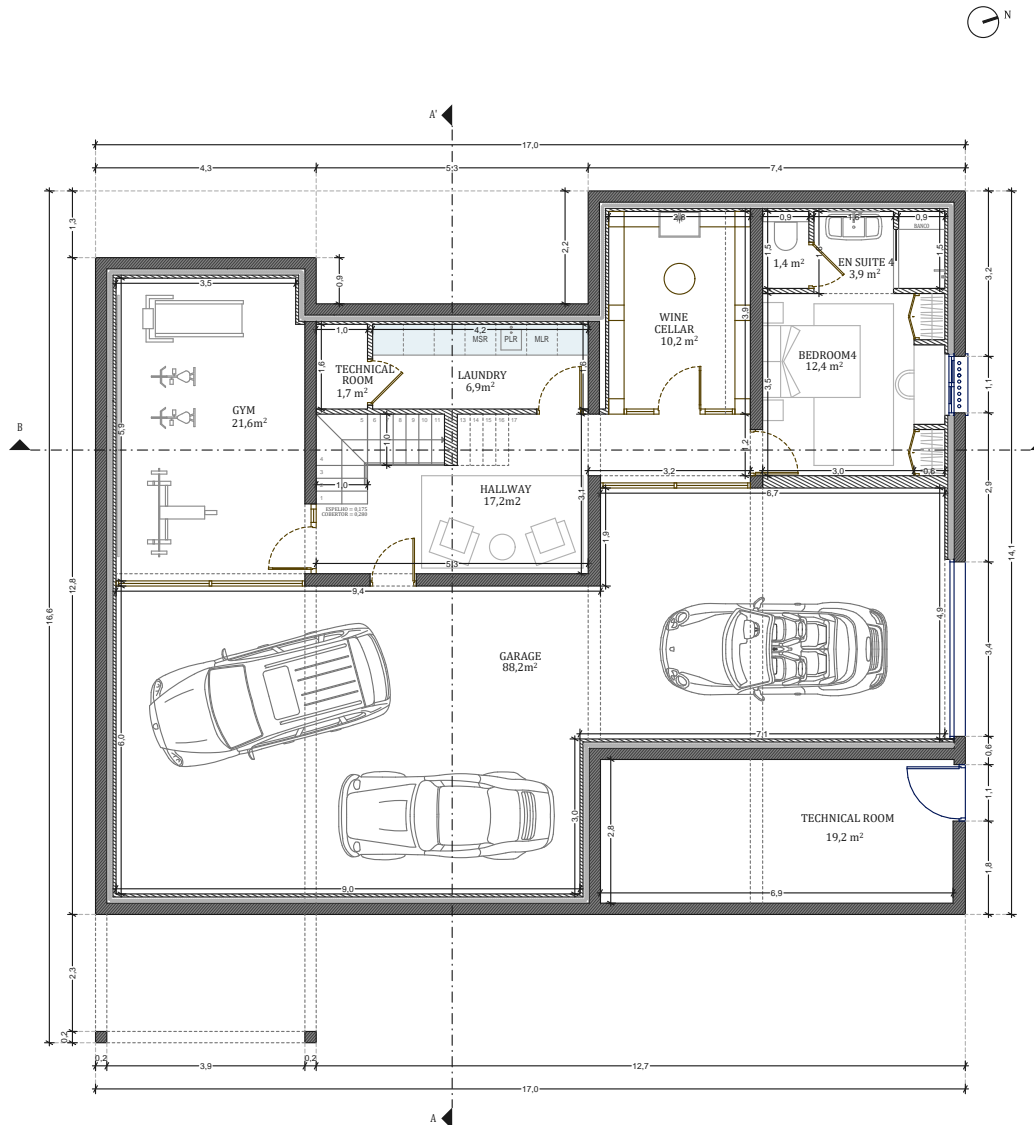
Patio/Fountain	22.7 m ²
Covered terrace	24.6 m ²
Pool Deck	4.8 m ²
Swimming pool	36 m ²

TOTAL AREA 416.9 m²

Plot of Land	941.3 m ²
Altimetry	19



QUINTA DE FARO
PRIVATE LUXURY VILLAS
ALGARVE



Kitchen equipment is not contractual. Their position is indicative. Dimensions and areas are given subject to technical construction and execution requirements. The fallout from false ceilings, soffits and pipes are not systematically shown. The thickness of the insulation will be determined by the technical execution study and therefore the data in this plan are only indicative.

Co-Developer :

MJ Développement
55 Avenue d'Espagne
64600 ANGLÈT - FRANCE
Tel: +33 5 59 03 13 00

MJ DÉVELOPPEMENT
PROMOTEUR CONSTRUCTEUR

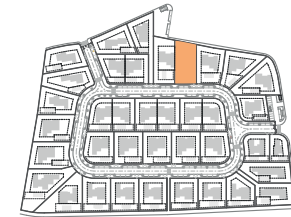
Serip Groupe
2, avenue de la Liberté
83120 Sainte-Maxime - FRANCE


SERIP GROUPE

SALES PLAN

VILLA N°22 DOUBLE STOREY

BASEMENT



TOTAL INTERIOR LIVING AREA 328.8 m²

GROUND FLOOR 167 m²

Living	40.9 m ²
Dining room	17.7 m ²
Kitchen	14.4 m ²
Office	6.2 m ²
Storeroom	5.1 m ²
Ensuite Bedroom 1	21.2 m ²
Ensuite Bedroom 2	20 m ²
Dressing Ensuite Bedroom 2	3 m ²
Ensuite Bedroom 3	26.7 m ²
Dressing Ensuite Bedroom 3	4.4 m ²
Guest toilet	1.9 m ²
Lobby, Hallway	5.5 m ²

BASEMENT 161.8 m²

Hallway	17.2 m ²
Ensuite Bedroom 4	17.7 m ²
Laundry	6.9 m ²
Gym, Hammam	21.6 m ²
Wine Cellar	10.2 m ²
Garage	88.2 m ²
Technical room swim Pool	20.9 m ²

TOTAL EXTERIOR AREA 88.1 m²

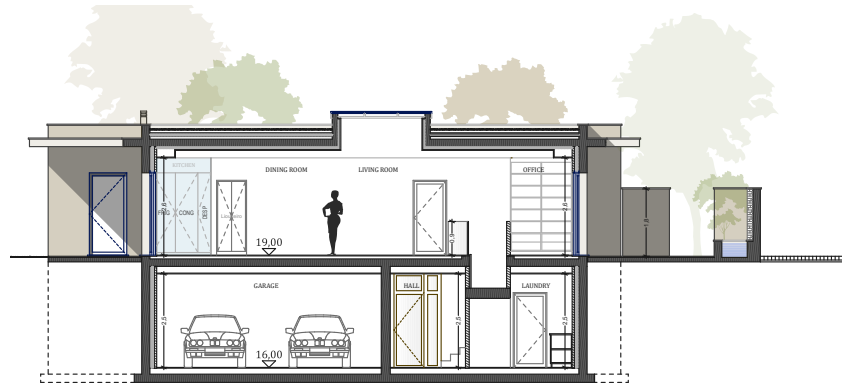
Patio/Fountain	22.7 m ²
Covered terrace	24.6 m ²
Pool Deck	4.8 m ²
Swimming pool	36 m ²

TOTAL AREA 416.9 m²

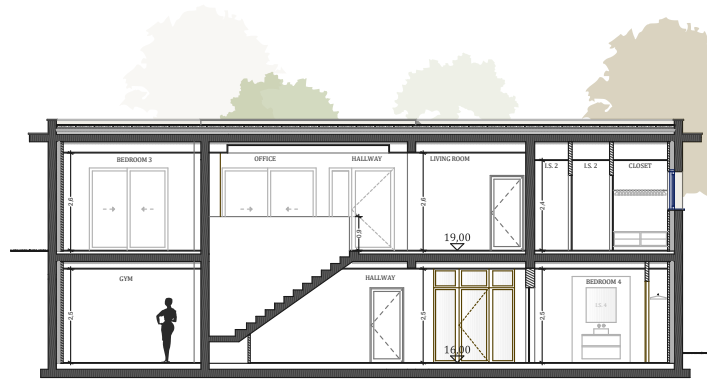
Plot of Land	941.3 m ²
Altimetry	19



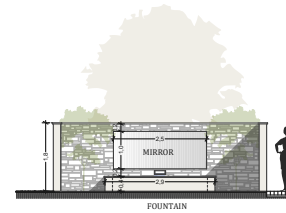
QUINTA DE FARO
— PRIVATE LUXURY VILLAS —
ALGARVE



Corte AA'



Corte BB'

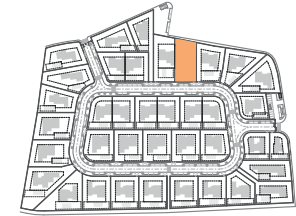


Corte - Patio

SALES PLAN

VILLA N°22 DOUBLE STOREY

SECTIONAL PLAN



TOTAL INTERIOR LIVING AREA 328.8 m²

GROUND FLOOR 167 m²

Living	40.9 m ²
Dining room	17.7 m ²
Kitchen	14.4 m ²
Office	6.2 m ²
Storeroom	5.1 m ²
Ensuite Bedroom 1	21.2 m ²
Ensuite Bedroom 2	20 m ²
Dressing Ensuite Bedroom 2	3 m ²
Ensuite Bedroom 3	26.7 m ²
Dressing Ensuite Bedroom 3	4.4 m ²
Guest toilet	1.9 m ²
Lobby, Hallway	5.5 m ²

BASEMENT 161.8 m²

Hallway	17.2 m ²
Ensuite Bedroom 4	17.7 m ²
Laundry	6.9 m ²
Gym, Hammam	21.6 m ²
Wine Cellar	10.2 m ²
Garage	88.2 m ²
Technical room swim Pool	20.9 m ²

TOTAL EXTERIOR AREA 88.1 m²

Patio/Fountain	22.7 m ²
Covered terrace	24.6 m ²
Pool Deck	4.8 m ²
Swimming pool	36 m ²

TOTAL AREA 416.9 m²

Plot of Land	941.3 m ²
Altimetry	19

Kitchen equipment is not contractual. Their position is indicative. Dimensions and areas are given subject to technical construction and execution requirements. The fallout from false ceilings, soffits and pipes are not systematically shown. The thickness of the insulation will be determined by the technical execution study and therefore the data in this plan are only indicative.

Co-Developer :

MJ Développement
55 Avenue d'Espagne
64600 ANGLÈT - FRANCE
Tel: +33 5 59 03 13 00

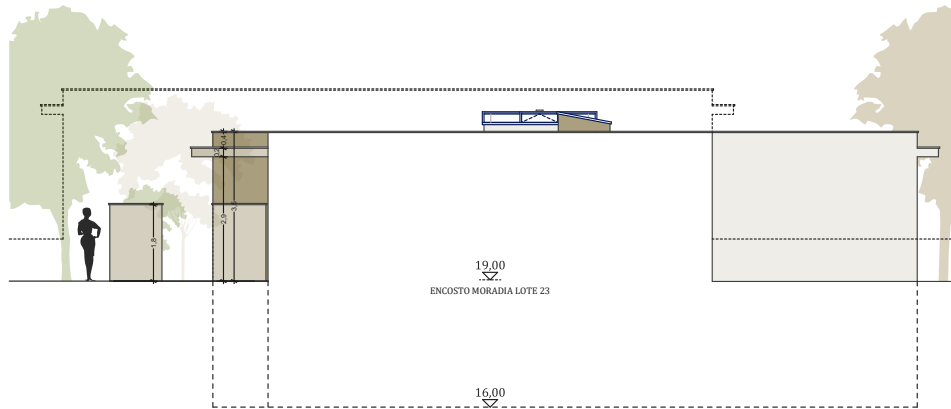
MJ DÉVELOPPEMENT
PROMOTEUR CONSTRUCTEUR

Serip Groupe
2, avenue de la Liberté
83120 Sainte-Maxime - FRANCE

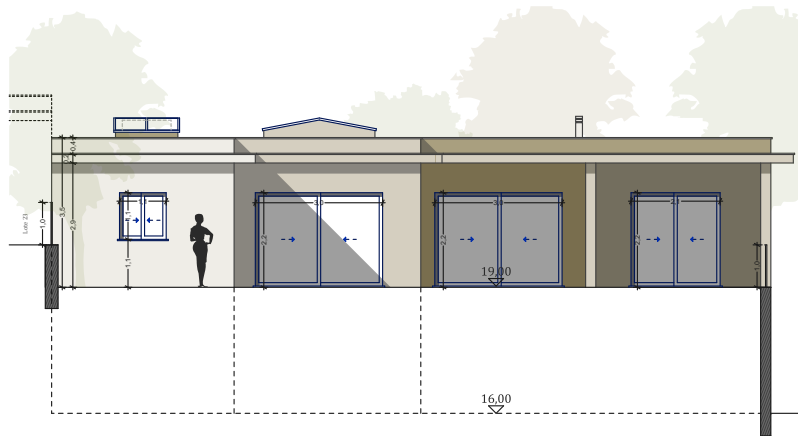

SERIP GROUPE



QUINTA DE FARO
— PRIVATE LUXURY VILLAS —
ALGARVE



Alcado Norte



Alcado Este

Kitchen equipment is not contractual. Their position is indicative. Dimensions and areas are given subject to technical construction and execution requirements. The fallout from false ceilings, soffits and pipes are not systematically shown. The thickness of the insulation will be determined by the technical execution study and therefore the data in this plan are only indicative.

Co-Developer :

MJ Développement
55 Avenue d'Espagne
64600 ANGLÈT - FRANCE
Tel: +33 5 59 03 13 00

MJ DÉVELOPPEMENT
PROMOTEUR CONSTRUCTEUR

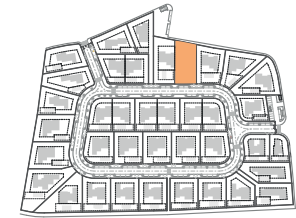
Serip Groupe
2, avenue de la Liberté
83120 Sainte-Maxime - FRANCE


SERIP GROUPE

SALES PLAN

VILLA N°22 DOUBLE STOREY

ELEVATIONS



TOTAL INTERIOR LIVING AREA 328.8 m²

GROUND FLOOR 167 m²

Living	40.9 m ²
Dining room	17.7 m ²
Kitchen	14.4 m ²
Office	6.2 m ²
Storeroom	5.1 m ²
Ensuite Bedroom 1	21.2 m ²
Ensuite Bedroom 2	20 m ²
Dressing Ensuite Bedroom 2	3 m ²
Ensuite Bedroom 3	26.7 m ²
Dressing Ensuite Bedroom 3	4.4 m ²
Guest toilet	1.9 m ²
Lobby, Hallway	5.5 m ²

BASEMENT 161.8 m²

Hallway	17.2 m ²
Ensuite Bedroom 4	17.7 m ²
Laundry	6.9 m ²
Gym, Hammam	21.6 m ²
Wine Cellar	10.2 m ²
Garage	88.2 m ²
Technical room swim Pool	20.9 m ²

TOTAL EXTERIOR AREA 88.1 m²

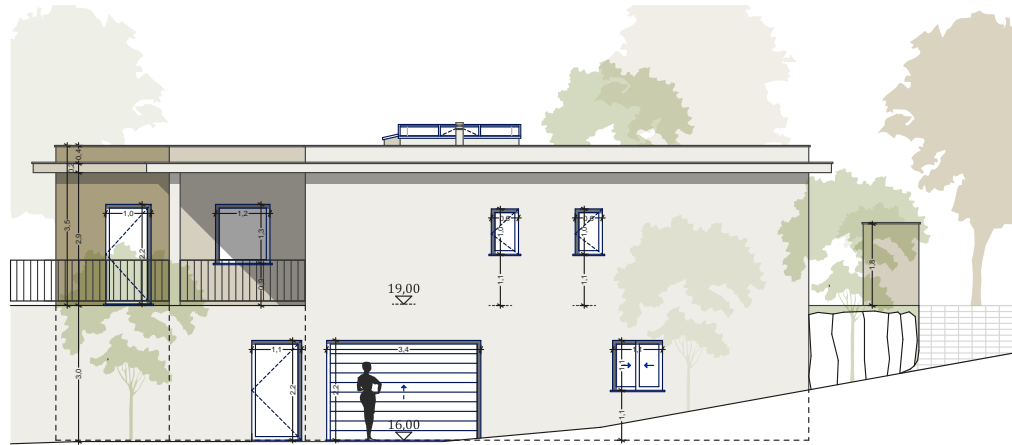
Patio/Fountain	22.7 m ²
Covered terrace	24.6 m ²
Pool Deck	4.8 m ²
Swimming pool	36 m ²

TOTAL AREA 416.9 m²

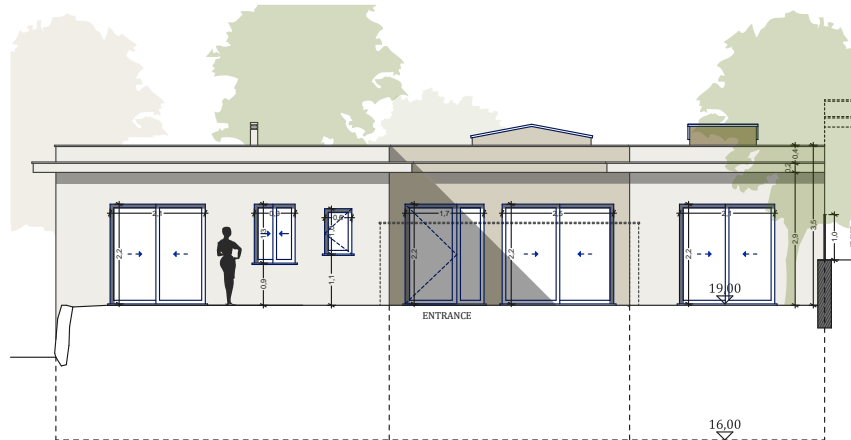
Plot of Land	941.3 m ²
Altimetry	19



QUINTA DE FARO
— PRIVATE LUXURY VILLAS —
ALGARVE



Alcado Sul



Alcado Oeste

Kitchen equipment is not contractual. Their position is indicative. Dimensions and areas are given subject to technical construction and execution requirements. The fallout from false ceilings, soffits and pipes are not systematically shown. The thickness of the insulation will be determined by the technical execution study and therefore the data in this plan are only indicative.

Co-Developer :

MJ Développement
55 Avenue d'Espagne
64600 ANGLET - FRANCE
Tel: +33 5 59 03 13 00

MJ DÉVELOPPEMENT
PROMOTEUR CONSTRUCTEUR

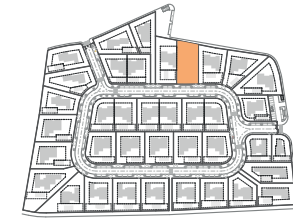
Serip Groupe
2, avenue de la Liberté
83120 Sainte-Maxime - FRANCE


SERIP GROUPE

SALES PLAN

VILLA N°22 DOUBLE STOREY

ELEVATIONS



TOTAL INTERIOR LIVING AREA 328.8 m²

GROUND FLOOR 167 m²

Living	40.9 m ²
Dining room	17.7 m ²
Kitchen	14.4 m ²
Office	6.2 m ²
Storeroom	5.1 m ²
Ensuite Bedroom 1	21.2 m ²
Ensuite Bedroom 2	20 m ²
Dressing Ensuite Bedroom 2	3 m ²
Ensuite Bedroom 3	26.7 m ²
Dressing Ensuite Bedroom 3	4.4 m ²
Guest toilet	1.9 m ²
Lobby, Hallway	5.5 m ²

BASEMENT 161.8 m²

Hallway	17.2 m ²
Ensuite Bedroom 4	17.7 m ²
Laundry	6.9 m ²
Gym, Hammam	21.6 m ²
Wine Cellar	10.2 m ²
Garage	88.2 m ²
Technical room swim Pool	20.9 m ²

TOTAL EXTERIOR AREA 88.1 m²

Patio/Fountain	22.7 m ²
Covered terrace	24.6 m ²
Pool Deck	4.8 m ²
Swimming pool	36 m ²

TOTAL AREA 416.9 m²

Plot of Land	941.3 m ²
Altimetry	19