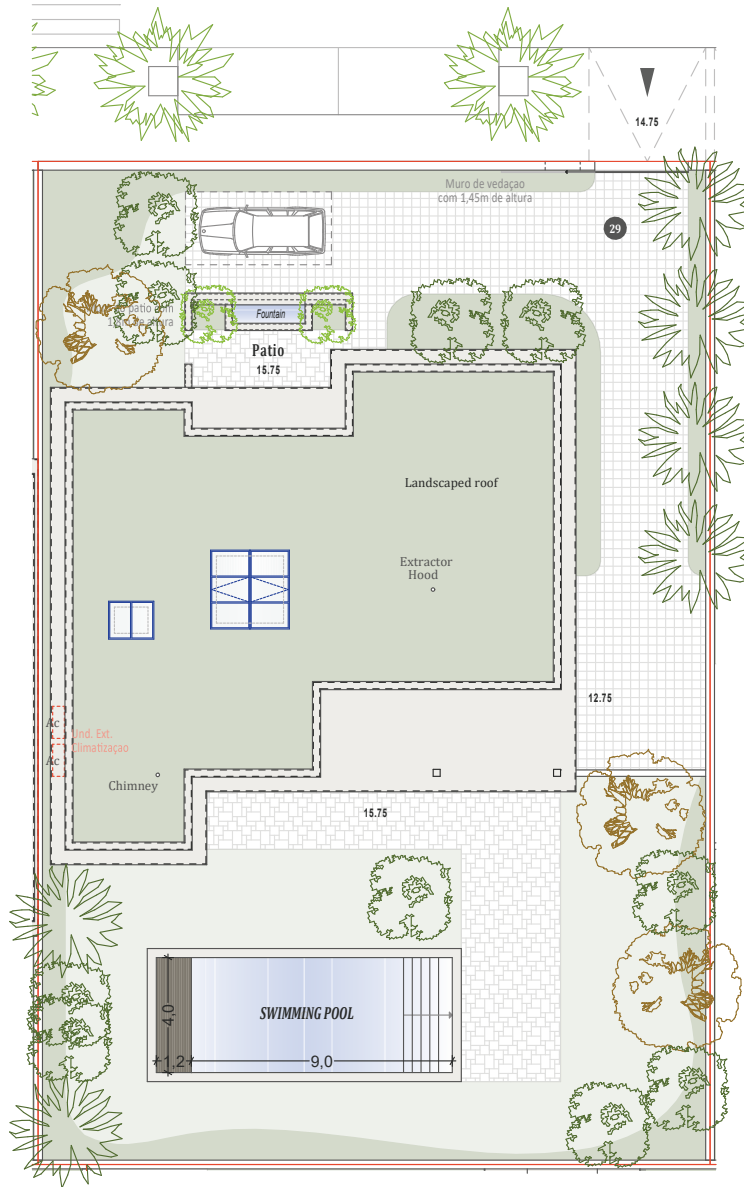


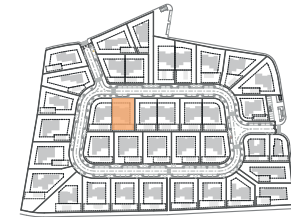
QUINTA DE FARO
PRIVATE LUXURY VILLAS
ALGARVE



SALES PLAN

VILLA N°29 DOUBLE STOREY

SITE PLAN



TOTAL INTERIOR LIVING AREA 358.4 m²

GROUND FLOOR 166.4 m²

Living	40.9 m ²
Dining room	17.2 m ²
Kitchen	14.4 m ²
Office	6.2 m ²
Storeroom Pantry	5.1 m ²
Ensuite Bedroom 1	20.5 m ²
Bedroom 1 Dressing	2.8 m ²
Ensuite Bedroom 2	26.7 m ²
Bedroom 2 Dressing	4.4 m ²
Ensuite Bedroom 3	20.8 m ²
Guest toilet	1.9 m ²
Lobby Entrance Hall	5.5 m ²

BASEMENT 192 m²

Ensuite Bedroom 4	18.3 m ²
Ensuite Bedroom 5	20.5 m ²
Hallway	19 m ²
Laundry	6.9 m ²
Gym, Hammam	37.5 m ²
Wine Cellar	10.1 m ²
Garage	58.8 m ²
Technical rooms	20.9 m ²

TOTAL EXTERIOR AREA 88.10 m²

Patio/Fountain	22.7 m ²
Covered terrace	24.6 m ²
Pool Deck	4.8 m ²
Swimming pool	36 m ²

TOTAL AREA 459.5 m²

Plot of Land	791.3 m ²
Altimetry	15.75

Kitchen equipment is not contractual. Their position is indicative. Dimensions and areas are given subject to technical construction and execution requirements. The fallout from false ceilings, soffits and pipes are not systematically shown. The thickness of the insulation will be determined by the technical execution study and therefore the data in this plan are only indicative.

Co-Developer :

MJ Développement
52 avenue du 8 Mai 1945
64100 BAYONNE- FRANCE
Tel: +33 5 59 03 13 00

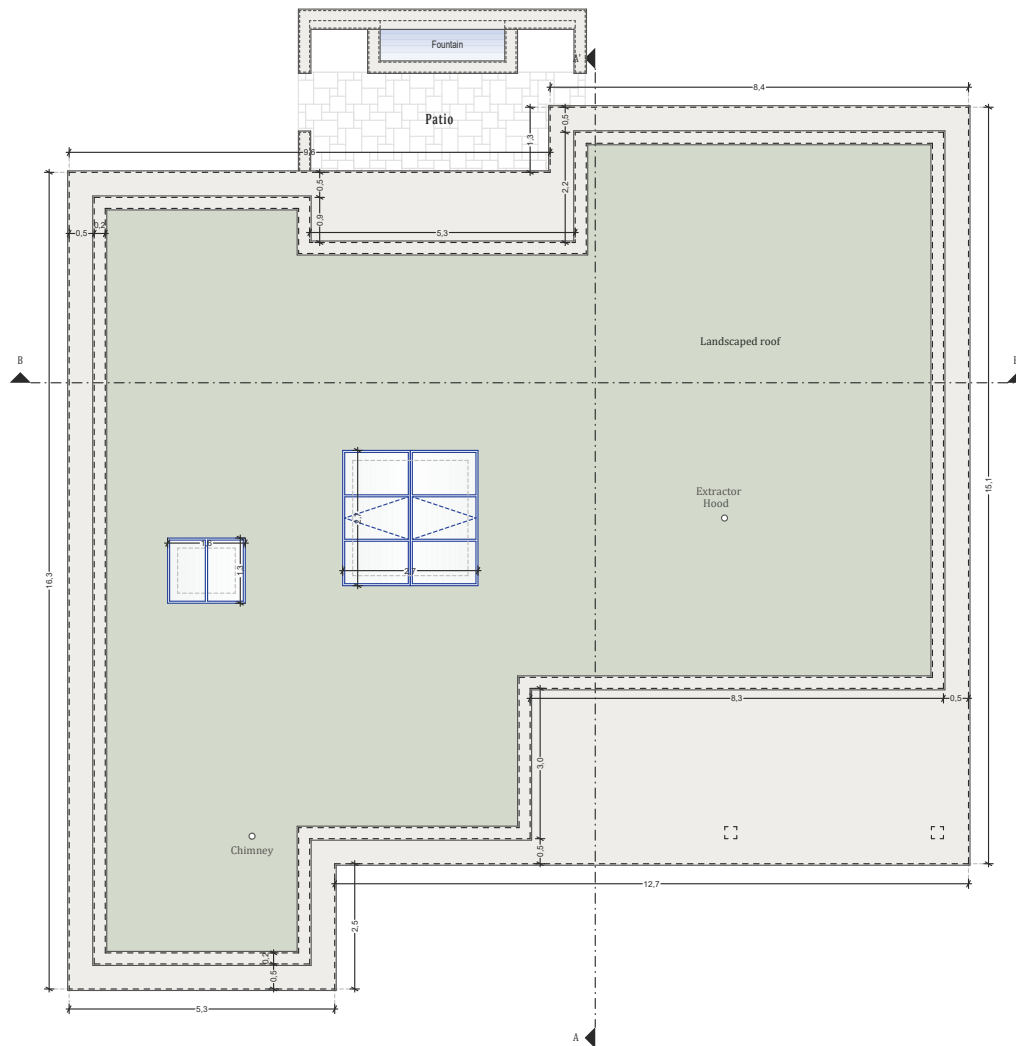
MJ DÉVELOPPEMENT
PROMOTEUR CONSTRUCTEUR

Serip Groupe
2, avenue de la Liberté
83120 Sainte-Maxime - FRANCE


SERIP GROUPE



QUINTA DE FARO
PRIVATE LUXURY VILLAS
ALGARVE



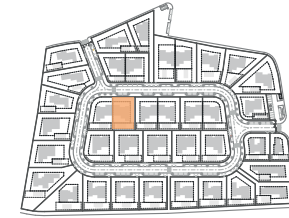
Roof plan

Kitchen equipment is not contractual. Their position is indicative. Dimensions and areas are given subject to technical construction and execution requirements. The fallout from false ceilings, soffits and pipes are not systematically shown. The thickness of the insulation will be determined by the technical execution study and therefore the data in this plan are only indicative.

SALES PLAN

VILLA N°29 DOUBLE STOREY

ROOF PLAN



TOTAL INTERIOR LIVING AREA 358.4 m²

GROUND FLOOR 166.4 m²

Living	40.9 m ²
Dining room	17.2 m ²
Kitchen	14.4 m ²
Office	6.2 m ²
Storeroom Pantry	5.1 m ²
Ensuite Bedroom 1	20.5 m ²
Bedroom 1 Dressing	2.8 m ²
Ensuite Bedroom 2	26.7 m ²
Bedroom 2 Dressing	4.4 m ²
Ensuite Bedroom 3	20.8 m ²
Guest toilet	1.9 m ²
Lobby Entrance Hall	5.5 m ²

BASEMENT 192 m²

Ensuite Bedroom 4	18.3 m ²
Ensuite Bedroom 5	20.5 m ²
Hallway	19 m ²
Laundry	6.9 m ²
Gym, Hammam	37.5 m ²
Wine Cellar	10.1 m ²
Garage	58.8 m ²
Technical rooms	20.9 m ²

TOTAL EXTERIOR AREA 88.10 m²

Patio/Fountain	22.7 m ²
Covered terrace	24.6 m ²
Pool Deck	4.8 m ²
Swimming pool	36 m ²

TOTAL AREA 459.5 m²

Plot of Land	791.3 m ²
Altimetry	15.75

Co-Developer :

MJ Développement
52 avenue du 8 Mai 1945
64100 BAYONNE- FRANCE
Tel: +33 5 59 03 13 00

MJ DÉVELOPPEMENT
PROMOTEUR CONSTRUCTEUR

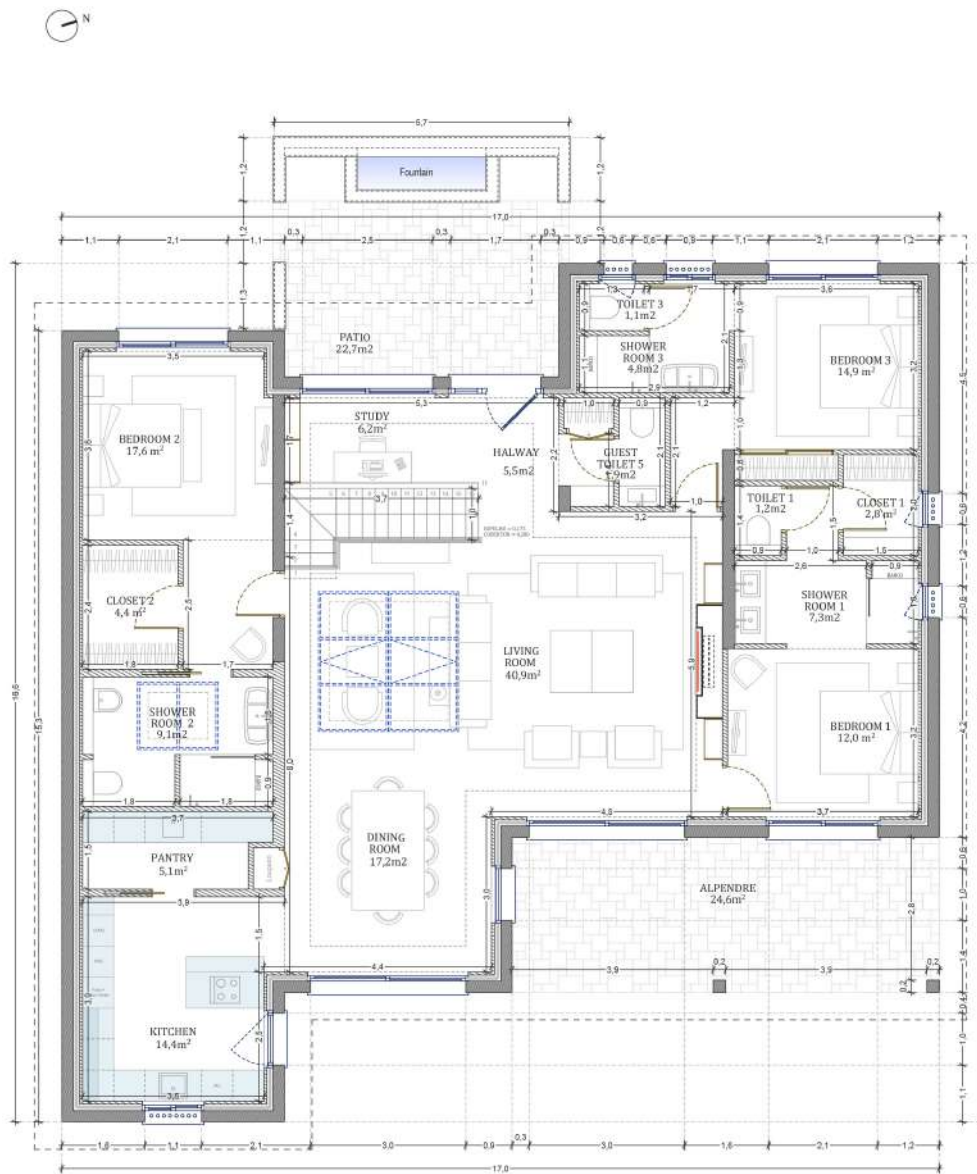
Serip Groupe
2, avenue de la Liberté
83120 Sainte-Maxime - FRANCE



SERIP GROUPE



QUINTA DE FARO
PRIVATE LUXURY VILLAS
ALGARVE



Ground Floor

Kitchen equipment is not contractual. Their position is indicative. Dimensions and areas are given subject to technical construction and execution requirements.
The fallout from false ceilings, soffits and pipes are not systematically shown.
The thickness of the insulation will be determined by the technical execution study and therefore the data in this plan are only indicative.

Co-Developer :

MJ Développement
52 avenue du 8 Mai 1945
64100 BAYONNE- FRANCE
Tel: +33 5 59 03 13 00

MJ DÉVELOPPEMENT
PROMOTEUR CONSTRUCTEUR

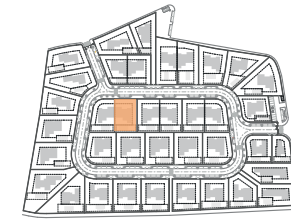
Serip Groupe
2, avenue de la Liberté
83120 Sainte-Maxime - FRANCE


SERIP GROUPE

SALES PLAN

VILLA N°29 DOUBLE STOREY

GROUND FLOOR



TOTAL INTERIOR LIVING AREA 358.4 m²

GROUND FLOOR 166.4 m²

Living	40.9 m ²
Dining room	17.2 m ²
Kitchen	14.4 m ²
Office	6.2 m ²
Storeroom Pantry	5.1 m ²
Ensuite Bedroom 1	20.5 m ²
Bedroom 1 Dressing	2.8 m ²
Ensuite Bedroom 2	26.7 m ²
Bedroom 2 Dressing	4.4 m ²
Ensuite Bedroom 3	20.8 m ²
Guest toilet	1.9 m ²
Lobby Entrance Hall	5.5 m ²

BASEMENT 192 m²

Ensuite Bedroom 4	18.3 m ²
Ensuite Bedroom 5	20.5 m ²
Hallway	19 m ²
Laundry	6.9 m ²
Gym, Hammam	37.5 m ²
Wine Cellar	10.1 m ²
Garage	58.8 m ²
Technical rooms	20.9 m ²

TOTAL EXTERIOR AREA 88.10 m²

Patio/Fountain	22.7 m ²
Covered terrace	24.6 m ²
Pool Deck	4.8 m ²
Swimming pool	36 m ²

TOTAL AREA 459.5 m²

Plot of Land	791.3 m ²
Altimetry	15.75



QUINTA DE FARO
PRIVATE LUXURY VILLAS
ALGARVE



Basement

Kitchen equipment is not contractual. Their position is indicative. Dimensions and areas are given subject to technical construction and execution requirements. The fallout from false ceilings, soffits and pipes are not systematically shown. The thickness of the insulation will be determined by the technical execution study and therefore the data in this plan are only indicative.

Co-Developer :

MJ Développement
52 avenue du 8 Mai 1945
64100 BAYONNE- FRANCE
Tel: +33 5 59 03 13 00

MJ DÉVELOPPEMENT
PROMOTEUR CONSTRUCTEUR

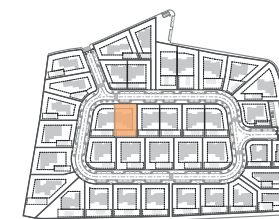
Serip Groupe
2, avenue de la Liberté
83120 Sainte-Maxime - FRANCE


SERIP GROUPE

SALES PLAN

VILLA N°29 DOUBLE STOREY

BASEMENT



TOTAL INTERIOR LIVING AREA 358.4 m²

GROUND FLOOR 166.4 m²

Living	40.9 m ²
Dining room	17.2 m ²
Kitchen	14.4 m ²
Office	6.2 m ²
Storeroom Pantry	5.1 m ²
Ensuite Bedroom 1	20.5 m ²
Bedroom 1 Dressing	2.8 m ²
Ensuite Bedroom 2	26.7 m ²
Bedroom 2 Dressing	4.4 m ²
Ensuite Bedroom 3	20.8 m ²
Guest toilet	1.9 m ²
Lobby Entrance Hall	5.5 m ²

BASEMENT 192 m²

Ensuite Bedroom 4	18.3 m ²
Ensuite Bedroom 5	20.5 m ²
Hallway	19 m ²
Laundry	6.9 m ²
Gym, Hammam	37.5 m ²
Wine Cellar	10.1 m ²
Garage	58.8 m ²
Technical rooms	20.9 m ²

TOTAL EXTERIOR AREA 88.10 m²

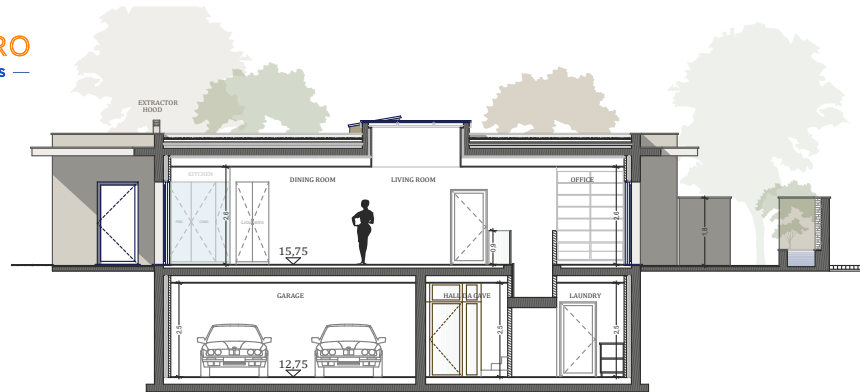
Patio/Fountain	22.7 m ²
Covered terrace	24.6 m ²
Pool Deck	4.8 m ²
Swimming pool	36 m ²

TOTAL AREA 459.5 m²

Plot of Land	791.3 m ²
Altimetry	15.75



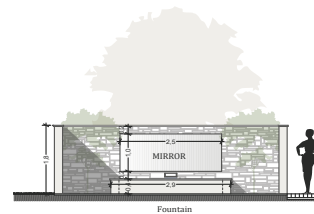
QUINTA DE FARO
— PRIVATE LUXURY VILLAS —
ALGARVE



Cut AA'



Cut BB'



Cut - Patio

Kitchen equipment is not contractual. Their position is indicative. Dimensions and areas are given subject to technical construction and execution requirements. The fallout from false ceilings, soffits and pipes are not systematically shown. The thickness of the insulation will be determined by the technical execution study and therefore the data in this plan are only indicative.

Co-Developer :

MJ Développement
52 avenue du 8 Mai 1945
64100 BAYONNE - FRANCE
Tel: +33 5 59 03 13 00

MJ DÉVELOPPEMENT
PROMOTEUR CONSTRUCTEUR

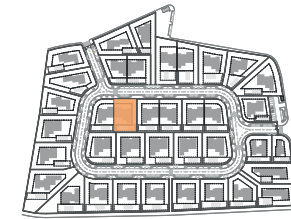
Serip Groupe
2, avenue de la Liberté
83120 Sainte-Maxime - FRANCE


SERIP GROUPE

SALES PLAN

VILLA N°29 DOUBLE STOREY

SECTIONAL PLAN



TOTAL INTERIOR LIVING AREA 358.4 m²

GROUND FLOOR 166.4 m²

Living	40.9 m ²
Dining room	17.2 m ²
Kitchen	14.4 m ²
Office	6.2 m ²
Storeroom Pantry	5.1 m ²
Ensuite Bedroom 1	20.5 m ²
Bedroom 1 Dressing	2.8 m ²
Ensuite Bedroom 2	26.7 m ²
Bedroom 2 Dressing	4.4 m ²
Ensuite Bedroom 3	20.8 m ²
Guest toilet	1.9 m ²
Lobby Entrance Hall	5.5 m ²

BASEMENT 192 m²

Ensuite Bedroom 4	18.3 m ²
Ensuite Bedroom 5	20.5 m ²
Hallway	19 m ²
Laundry	6.9 m ²
Gym, Hammam	37.5 m ²
Wine Cellar	10.1 m ²
Garage	58.8 m ²
Technical rooms	20.9 m ²

TOTAL EXTERIOR AREA 88.10 m²

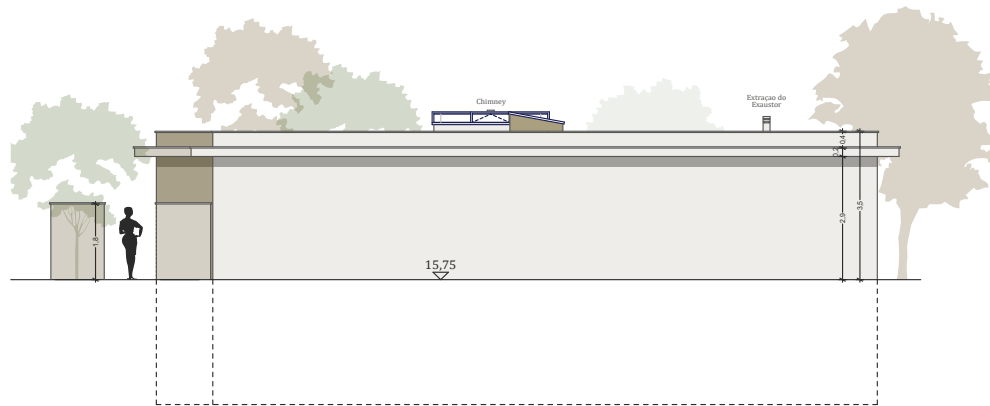
Patio/Fountain	22.7 m ²
Covered terrace	24.6 m ²
Pool Deck	4.8 m ²
Swimming pool	36 m ²

TOTAL AREA 459.5 m²

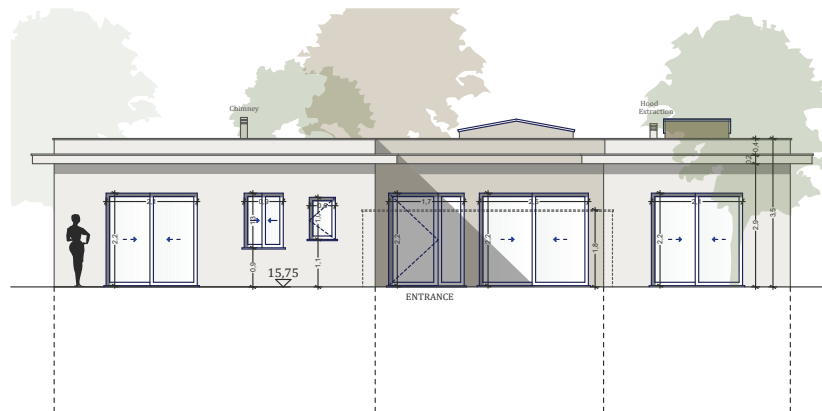
Plot of Land	791.3 m ²
Altimetry	15.75



QUINTA DE FARO
PRIVATE LUXURY VILLAS
ALGARVE



South elevation



West elevation

Kitchen equipment is not contractual. Their position is indicative. Dimensions and areas are given subject to technical construction and execution requirements. The fallout from false ceilings, soffits and pipes are not systematically shown. The thickness of the insulation will be determined by the technical execution study and therefore the data in this plan are only indicative.

Co-Developer :

MJ Développement
52 avenue du 8 Mai 1945
64100 BAYONNE- FRANCE
Tel: +33 5 59 03 13 00

MJ DÉVELOPPEMENT
PROMOTEUR CONSTRUCTEUR

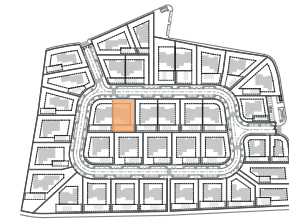
Serip Groupe
2, avenue de la Liberté
83120 Sainte-Maxime - FRANCE


SERIP GROUPE

SALES PLAN

VILLA N°29 DOUBLE STOREY

ELEVATION



TOTAL INTERIOR LIVING AREA 358.4 m²

GROUND FLOOR 166.4 m²

Living	40.9 m ²
Dining room	17.2 m ²
Kitchen	14.4 m ²
Office	6.2 m ²
Storeroom Pantry	5.1 m ²
Ensuite Bedroom 1	20.5 m ²
Bedroom 1 Dressing	2.8 m ²
Ensuite Bedroom 2	26.7 m ²
Bedroom 2 Dressing	4.4 m ²
Ensuite Bedroom 3	20.8 m ²
Guest toilet	1.9 m ²
Lobby Entrance Hall	5.5 m ²

BASEMENT 192 m²

Ensuite Bedroom 4	18.3 m ²
Ensuite Bedroom 5	20.5 m ²
Hallway	19 m ²
Laundry	6.9 m ²
Gym, Hammam	37.5 m ²
Wine Cellar	10.1 m ²
Garage	58.8 m ²
Technical rooms	20.9 m ²

TOTAL EXTERIOR AREA 88.10 m²

Patio/Fountain	22.7 m ²
Covered terrace	24.6 m ²
Pool Deck	4.8 m ²
Swimming pool	36 m ²

TOTAL AREA 446.5 m²

Plot of Land	791.3 m ²
Altimetry	15,75