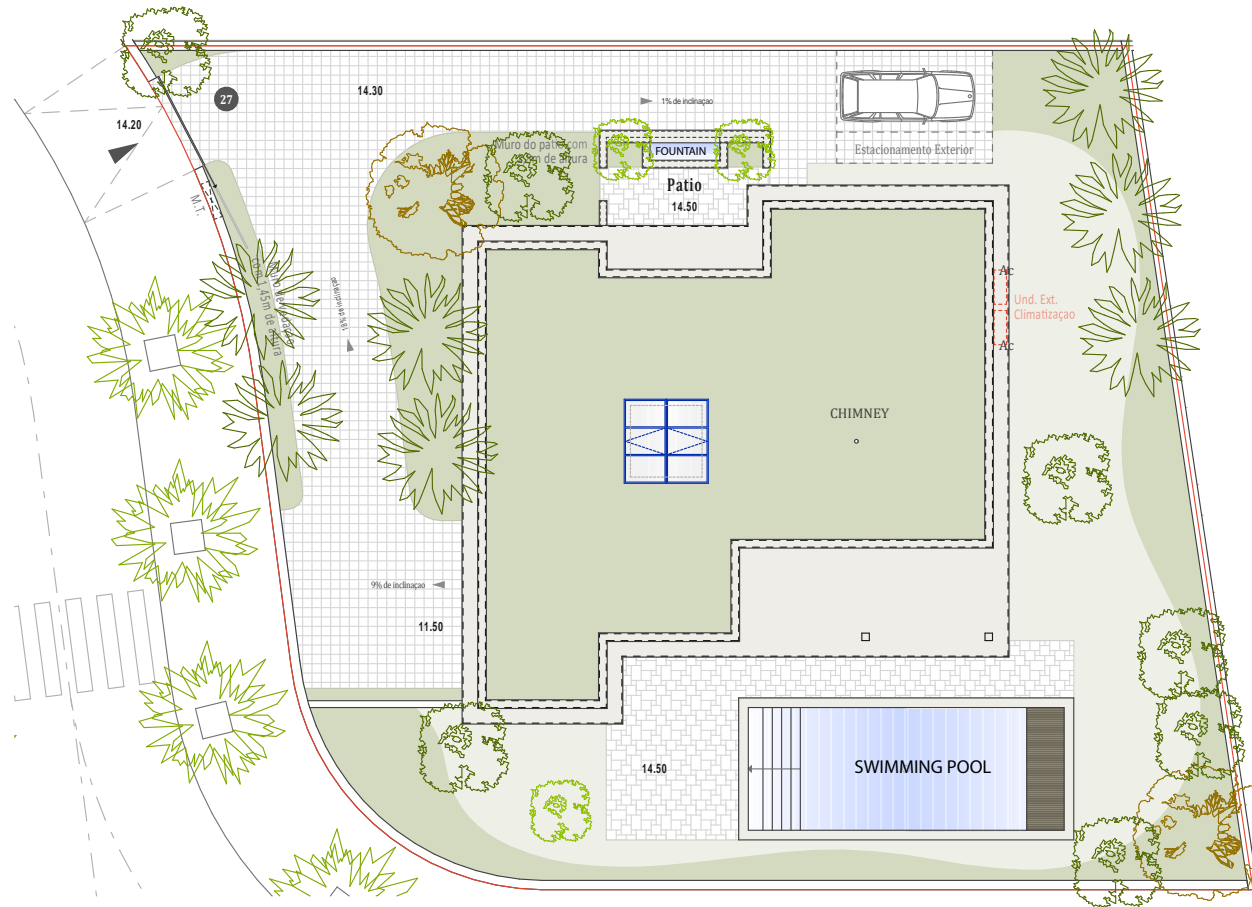




**QUINTA DE FARO**  
— PRIVATE LUXURY VILLAS —  
ALGARVE



Kitchen equipment is not contractual. Their position is indicative. Dimensions and areas are given subject to technical construction and execution requirements.  
The fallout from false ceilings, soffits and pipes are not systematically shown.  
The thickness of the insulation will be determined by the technical execution study and therefore the data in this plan are only indicative.

Co-Developer :

MJ Développement  
55 Avenue d'Espagne  
64600 ANGLET - FRANCE  
Tel: +33 5 59 03 13 00

**MJ** DÉVELOPPEMENT  
PROMOTEUR CONSTRUCTEUR

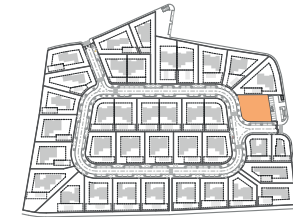
Serip Groupe  
2, avenue de la Liberté  
83120 Sainte-Maxime - FRANCE

  
SERIP GROUPE

## SALES PLAN

VILLA N°18 DOUBLE STOREY

SITE PLAN



**TOTAL INTERIOR LIVING AREA 325.9 m<sup>2</sup>**

**GROUND FLOOR 159.9 m<sup>2</sup>**

Living	39.7 m <sup>2</sup>
Dining room	16.6 m <sup>2</sup>
Kitchen	13.7 m <sup>2</sup>
Office	5.9 m <sup>2</sup>
Storeroom	4.8 m <sup>2</sup>
Ensuite Bedroom 1	21 m <sup>2</sup>
Ensuite Bedroom 2	20 m <sup>2</sup>
Dressing Ensuite Bedroom 2	3 m <sup>2</sup>
Ensuite Bedroom 3	24.7 m <sup>2</sup>
Dressing Ensuite Bedroom 3	3.4 m <sup>2</sup>
Guest toilet	1.9 m <sup>2</sup>
Lobby, Hallway	5.2 m <sup>2</sup>

**BASEMENT 166 m<sup>2</sup>**

Hallway	16.6 m <sup>2</sup>
Ensuite Bedroom 4	19.4 m <sup>2</sup>
Laundry	8.8 m <sup>2</sup>
Gym, Hammam	37 m <sup>2</sup>
Wine Cellar	12.9 m <sup>2</sup>
Garage	71.3 m <sup>2</sup>
Technical room swim Pool	8.8 m <sup>2</sup>

**TOTAL EXTERIOR AREA 85.9 m<sup>2</sup>**

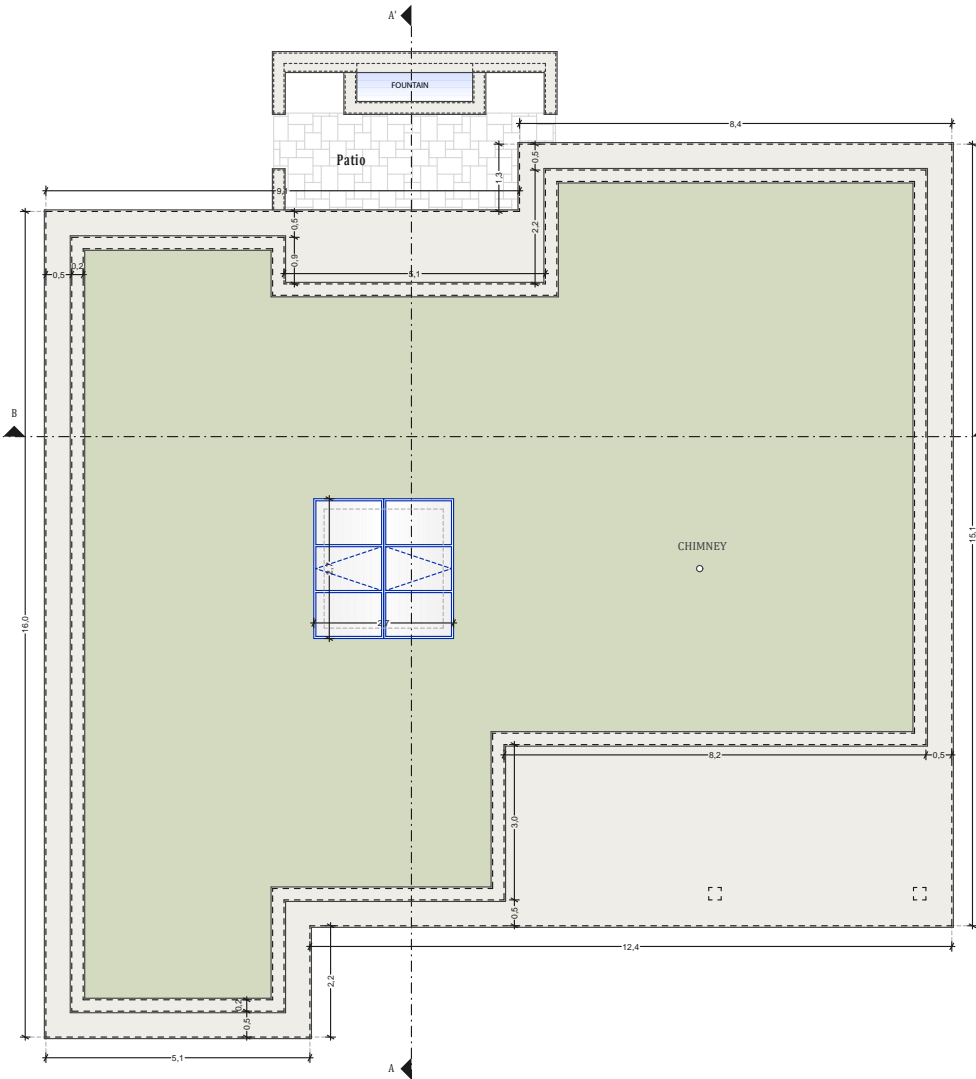
Patio/Fountain	20.8 m <sup>2</sup>
Covered terrace	24.3 m <sup>2</sup>
Pool Deck	4.8 m <sup>2</sup>
Swimming pool	36 m <sup>2</sup>

**TOTAL AREA 411.8 m<sup>2</sup>**

Plot of Land	803.5 m <sup>2</sup>
Altimetry	14.5



**QUINTA DE FARO**  
— PRIVATE LUXURY VILLAS —  
ALGARVE



Roof Plan

Kitchen equipment is not contractual. Their position is indicative. Dimensions and areas are given subject to technical construction and execution requirements. The fallout from false ceilings, soffits and pipes are not systematically shown. The thickness of the insulation will be determined by the technical execution study and therefore the data in this plan are only indicative.

Co-Developer :

MJ Développement  
55 Avenue d'Espagne  
64600 ANGLÈT - FRANCE  
Tel: +33 5 59 03 13 00



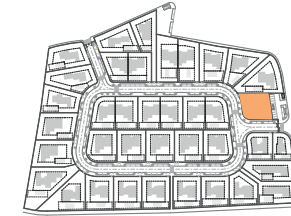
Serip Groupe  
2, avenue de la Liberté  
83120 Sainte-Maxime - FRANCE



## SALES PLAN

VILLA N°18 DOUBLE STOREY

FLOOR COVERING PLAN



**TOTAL INTERIOR LIVING AREA 325.9 m<sup>2</sup>**

**GROUND FLOOR 159.9 m<sup>2</sup>**

Living	39.7 m <sup>2</sup>
Dining room	16.6 m <sup>2</sup>
Kitchen	13.7 m <sup>2</sup>
Office	5.9 m <sup>2</sup>
Storeroom	4.8 m <sup>2</sup>
Ensuite Bedroom 1	21 m <sup>2</sup>
Ensuite Bedroom 2	20 m <sup>2</sup>
Dressing Ensuite Bedroom 2	3 m <sup>2</sup>
Ensuite Bedroom 3	24.7 m <sup>2</sup>
Dressing Ensuite Bedroom 3	3.4 m <sup>2</sup>
Guest toilet	1.9 m <sup>2</sup>
Lobby, Hallway	5.2 m <sup>2</sup>

**BASEMENT 166 m<sup>2</sup>**

Hallway	16.6 m <sup>2</sup>
Ensuite Bedroom 4	19.4 m <sup>2</sup>
Laundry	8.8 m <sup>2</sup>
Gym, Hammam	37 m <sup>2</sup>
Wine Cellar	12.9 m <sup>2</sup>
Garage	71.3 m <sup>2</sup>
Technical room swim Pool	8.8 m <sup>2</sup>

**TOTAL EXTERIOR AREA 85.9 m<sup>2</sup>**

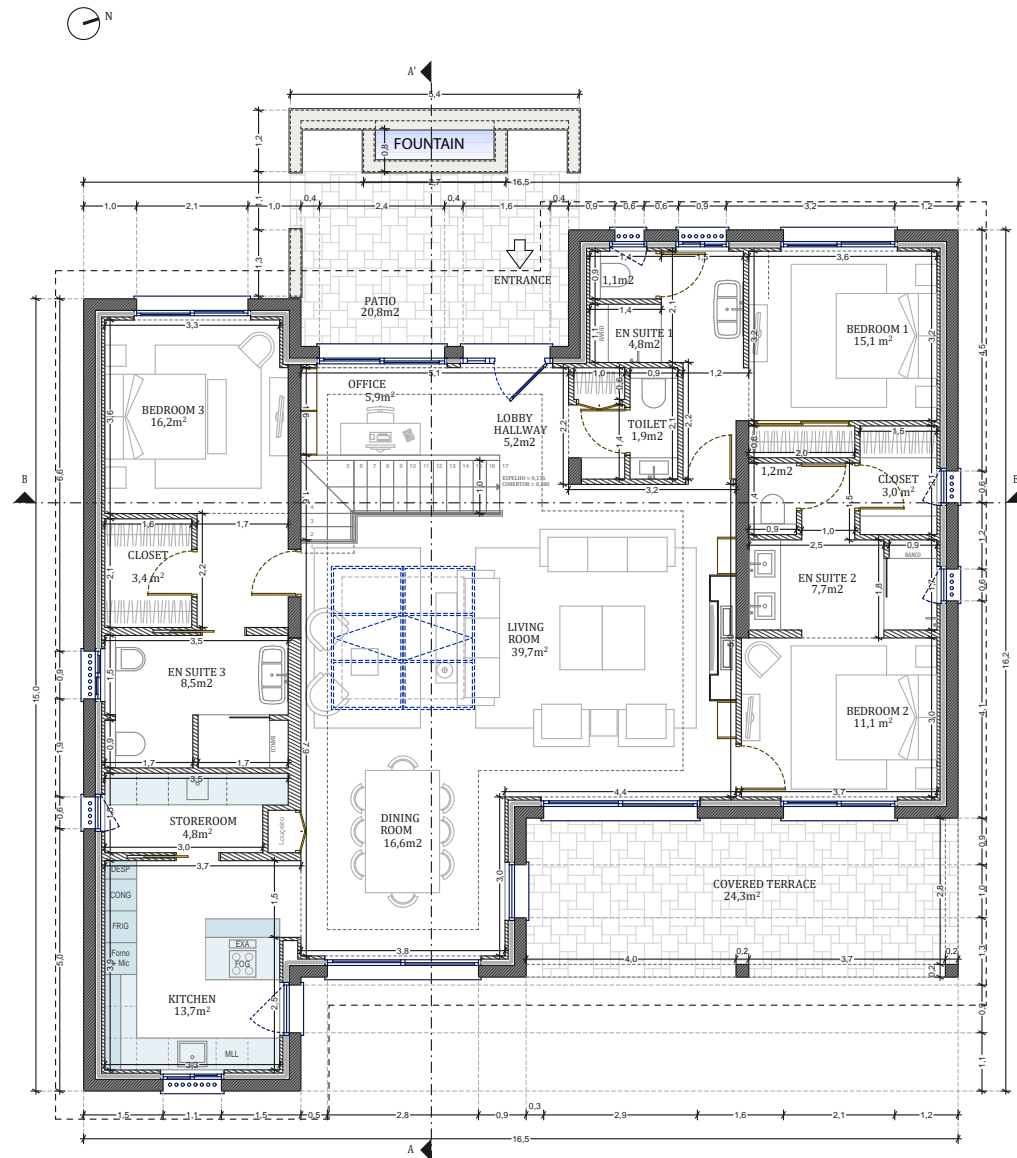
Patio/Fountain	20.8 m <sup>2</sup>
Covered terrace	24.3 m <sup>2</sup>
Pool Deck	4.8 m <sup>2</sup>
Swimming pool	36 m <sup>2</sup>

**TOTAL AREA 411.8 m<sup>2</sup>**

Plot of Land	803.5 m <sup>2</sup>
Altimetry	14.5



**QUINTA DE FARO**  
PRIVATE LUXURY VILLAS  
ALGARVE



Planta do R/

Kitchen equipment is not contractual. Their position is indicative. Dimensions and areas are given subject to technical construction and execution requirements. The fallout from false ceilings, soffits and pipes are not systematically shown. The thickness of the insulation will be determined by the technical execution study and therefore the data in this plan are only indicative.

Co-Developer :

MJ Développement  
55 Avenue d'Espagne  
64600 ANGLÈT - FRANCE  
Tel: +33 5 59 03 13 00

**MJ** DÉVELOPPEMENT  
PROMOTEUR CONSTRUCTEUR

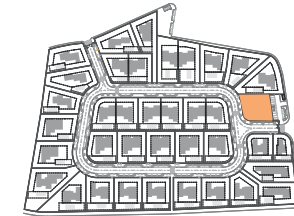
Serip Groupe  
2, avenue de la Liberté  
83120 Sainte-Maxime - FRANCE

**SERIP GROUPE**

## SALES PLAN

VILLA N°18 DOUBLE STOREY

GROUND FLOOR



**TOTAL INTERIOR LIVING AREA 325.9 m<sup>2</sup>**

**GROUND FLOOR 159.9 m<sup>2</sup>**

Living	39.7 m <sup>2</sup>
Dining room	16.6 m <sup>2</sup>
Kitchen	13.7 m <sup>2</sup>
Office	5.9 m <sup>2</sup>
Storeroom	4.8 m <sup>2</sup>
Ensuite Bedroom 1	21 m <sup>2</sup>
Ensuite Bedroom 2	20 m <sup>2</sup>
Dressing Ensuite Bedroom 2	3 m <sup>2</sup>
Ensuite Bedroom 3	24.7 m <sup>2</sup>
Dressing Ensuite Bedroom 3	3.4 m <sup>2</sup>
Guest toilet	1.9 m <sup>2</sup>
Lobby, Hallway	5.2 m <sup>2</sup>

**BASEMENT 166 m<sup>2</sup>**

Hallway	16.6 m <sup>2</sup>
Ensuite Bedroom 4	19.4 m <sup>2</sup>
Laundry	8.8 m <sup>2</sup>
Gym, Hammam	37 m <sup>2</sup>
Wine Cellar	12.9 m <sup>2</sup>
Garage	71.3 m <sup>2</sup>
Technical room swim Pool	8.8 m <sup>2</sup>

**TOTAL EXTERIOR AREA 85.9 m<sup>2</sup>**

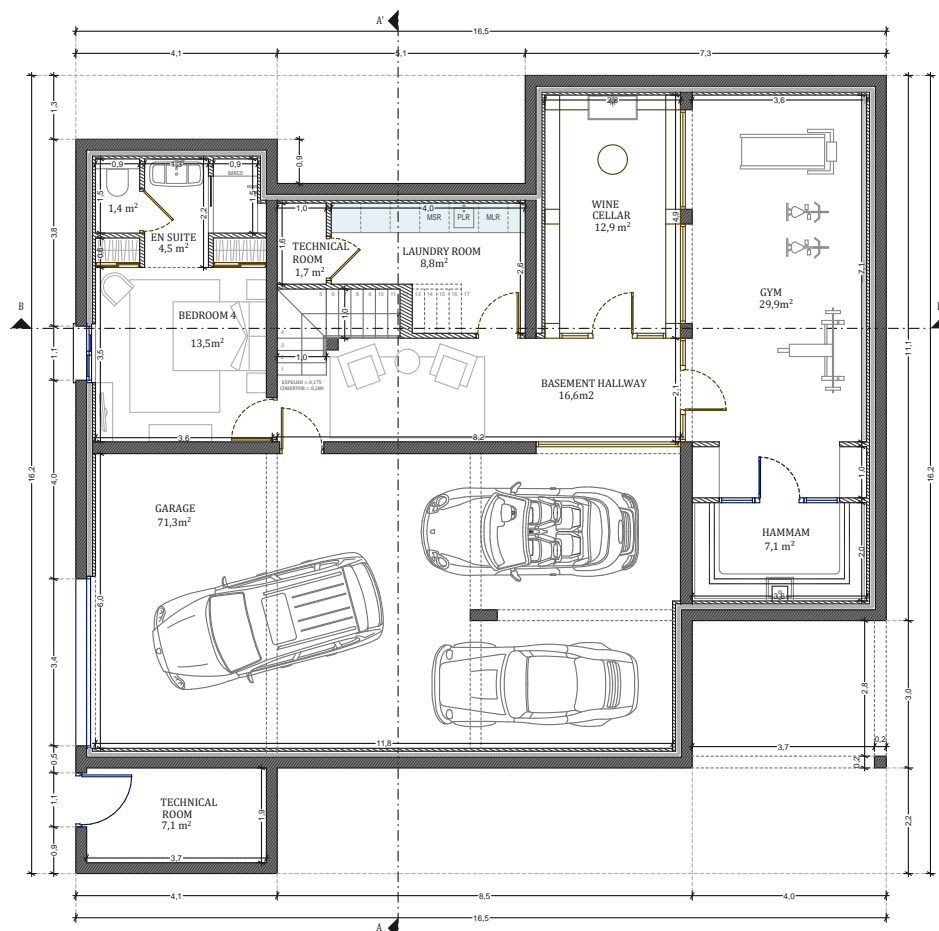
Patio/Fountain	20.8 m <sup>2</sup>
Covered terrace	24.3 m <sup>2</sup>
Pool Deck	4.8 m <sup>2</sup>
Swimming pool	36 m <sup>2</sup>

**TOTAL AREA 411.8 m<sup>2</sup>**

Plot of Land	803.5 m <sup>2</sup>
Altometry	14.5



**QUINTA DE FARO**  
PRIVATE LUXURY VILLAS  
ALGARVE



Planta da Cave

Kitchen equipment is not contractual. Their position is indicative. Dimensions and areas are given subject to technical construction and execution requirements. The fallout from false ceilings, soffits and pipes are not systematically shown. The thickness of the insulation will be determined by the technical execution study and therefore the data in this plan are only indicative.

Co-Developer :

MJ Développement  
55 Avenue d'Espagne  
64600 ANGLÈT - FRANCE  
Tel: +33 5 59 03 13 00

**MJ** DÉVELOPPEMENT  
PROMOTEUR CONSTRUCTEUR

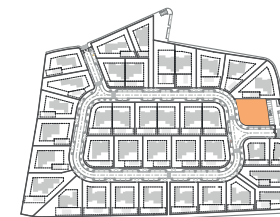
Serip Groupe  
2, avenue de la Liberté  
83120 Sainte-Maxime - FRANCE

  
SERIP GROUPE

## SALES PLAN

VILLA N°18 DOUBLE STOREY

BASEMENT



**TOTAL INTERIOR LIVING AREA 325.9 m<sup>2</sup>**

**GROUND FLOOR 159.9 m<sup>2</sup>**

Living	39.7 m <sup>2</sup>
Dining room	16.6 m <sup>2</sup>
Kitchen	13.7 m <sup>2</sup>
Office	5.9 m <sup>2</sup>
Storeroom	4.8 m <sup>2</sup>
Ensuite Bedroom 1	21 m <sup>2</sup>
Ensuite Bedroom 2	20 m <sup>2</sup>
Dressing Ensuite Bedroom 2	3 m <sup>2</sup>
Ensuite Bedroom 3	24.7 m <sup>2</sup>
Dressing Ensuite Bedroom 3	3.4 m <sup>2</sup>
Guest toilet	1.9 m <sup>2</sup>
Lobby, Hallway	5.2 m <sup>2</sup>

**BASEMENT 166 m<sup>2</sup>**

Hallway	16.6 m <sup>2</sup>
Ensuite Bedroom 4	19.4 m <sup>2</sup>
Laundry	8.8 m <sup>2</sup>
Gym, Hammam	37 m <sup>2</sup>
Wine Cellar	12.9 m <sup>2</sup>
Garage	71.3 m <sup>2</sup>
Technical room swim Pool	8.8 m <sup>2</sup>

**TOTAL EXTERIOR AREA 85.9 m<sup>2</sup>**

Patio/Fountain	20.8 m <sup>2</sup>
Covered terrace	24.3 m <sup>2</sup>
Pool Deck	4.8 m <sup>2</sup>
Swimming pool	36 m <sup>2</sup>

**TOTAL AREA 411.8 m<sup>2</sup>**

Plot of Land	803.5 m <sup>2</sup>
Altimetry	14.5



**QUINTA DE FARO**  
— PRIVATE LUXURY VILLAS —  
ALGARVE



Corte AA'



Corte BB'

Kitchen equipment is not contractual. Their position is indicative. Dimensions and areas are given subject to technical construction and execution requirements. The fallout from false ceilings, soffits and pipes are not systematically shown. The thickness of the insulation will be determined by the technical execution study and therefore the data in this plan are only indicative.

Co-Developer :

MJ Développement  
55 Avenue d'Espagne  
64600 ANGET - FRANCE  
Tel: +33 5 59 03 13 00

**MJ** DÉVELOPPEMENT  
PROMOTEUR CONSTRUCTEUR

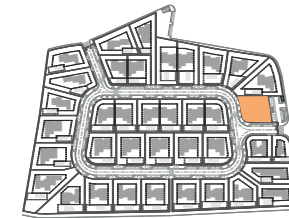
Serip Groupe  
2, avenue de la Liberté  
83120 Sainte-Maxime - FRANCE

  
SERIP GROUPE

## SALES PLAN

VILLA N°18 DOUBLE STOREY

SECTIONAL PLAN



**TOTAL INTERIOR LIVING AREA 325.9 m<sup>2</sup>**

**GROUND FLOOR 159.9 m<sup>2</sup>**

Living	39.7 m <sup>2</sup>
Dining room	16.6 m <sup>2</sup>
Kitchen	13.7 m <sup>2</sup>
Office	5.9 m <sup>2</sup>
Storeroom	4.8 m <sup>2</sup>
Ensuite Bedroom 1	21 m <sup>2</sup>
Ensuite Bedroom 2	20 m <sup>2</sup>
Dressing Ensuite Bedroom 2	3 m <sup>2</sup>
Ensuite Bedroom 3	24.7 m <sup>2</sup>
Dressing Ensuite Bedroom 3	3.4 m <sup>2</sup>
Guest toilet	1.9 m <sup>2</sup>
Lobby, Hallway	5.2 m <sup>2</sup>

**BASEMENT 166 m<sup>2</sup>**

Hallway	16.6 m <sup>2</sup>
Ensuite Bedroom 4	19.4 m <sup>2</sup>
Laundry	8.8 m <sup>2</sup>
Gym, Hammam	37 m <sup>2</sup>
Wine Cellar	12.9 m <sup>2</sup>
Garage	71.3 m <sup>2</sup>
Technical room swim Pool	8.8 m <sup>2</sup>

**TOTAL EXTERIOR AREA 85.9 m<sup>2</sup>**

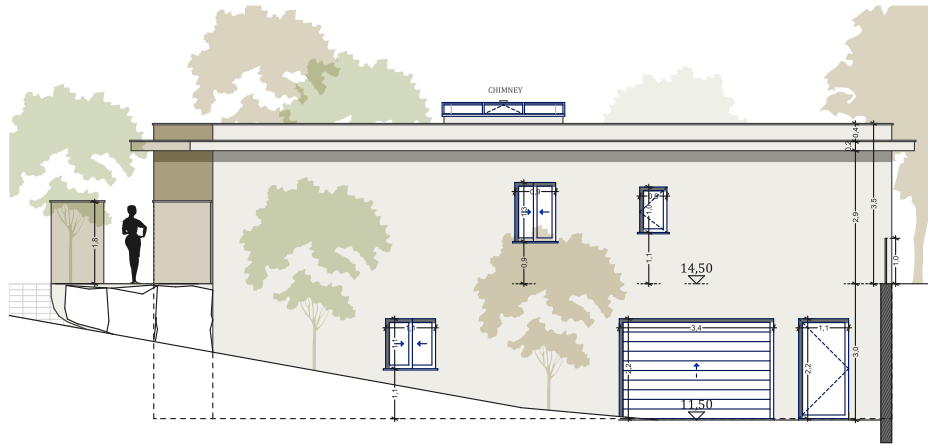
Patio/Fountain	20.8 m <sup>2</sup>
Covered terrace	24.3 m <sup>2</sup>
Pool Deck	4.8 m <sup>2</sup>
Swimming pool	36 m <sup>2</sup>

**TOTAL AREA 411.8 m<sup>2</sup>**

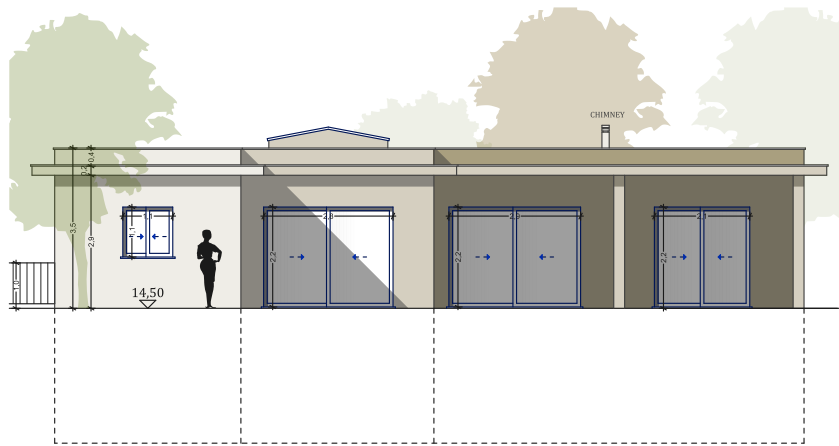
Plot of Land	803.5 m <sup>2</sup>
Altimetry	14.5



**QUINTA DE FARO**  
— PRIVATE LUXURY VILLAS —  
ALGARVE



Alcado Sul



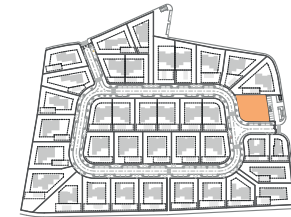
Alcado Este

Kitchen equipment is not contractual. Their position is indicative. Dimensions and areas are given subject to technical construction and execution requirements. The fallout from false ceilings, soffits and pipes are not systematically shown. The thickness of the insulation will be determined by the technical execution study and therefore the data in this plan are only indicative.

## SALES PLAN

VILLA N°18 DOUBLE STOREY

ELEVATIONS



**TOTAL INTERIOR LIVING AREA 325.9 m<sup>2</sup>**

**GROUND FLOOR 159.9 m<sup>2</sup>**

Living	39.7 m <sup>2</sup>
Dining room	16.6 m <sup>2</sup>
Kitchen	13.7 m <sup>2</sup>
Office	5.9 m <sup>2</sup>
Storeroom	4.8 m <sup>2</sup>
Ensuite Bedroom 1	21 m <sup>2</sup>
Ensuite Bedroom 2	20 m <sup>2</sup>
Dressing Ensuite Bedroom 2	3 m <sup>2</sup>
Ensuite Bedroom 3	24.7 m <sup>2</sup>
Dressing Ensuite Bedroom 3	3.4 m <sup>2</sup>
Guest toilet	1.9 m <sup>2</sup>
Lobby, Hallway	5.2 m <sup>2</sup>

**BASEMENT 166 m<sup>2</sup>**

Hallway	16.6 m <sup>2</sup>
Ensuite Bedroom 4	19.4 m <sup>2</sup>
Laundry	8.8 m <sup>2</sup>
Gym, Hammam	37 m <sup>2</sup>
Wine Cellar	12.9 m <sup>2</sup>
Garage	71.3 m <sup>2</sup>
Technical room swim Pool	8.8 m <sup>2</sup>

**TOTAL EXTERIOR AREA 85.9 m<sup>2</sup>**

Patio/Fountain	20.8 m <sup>2</sup>
Covered terrace	24.3 m <sup>2</sup>
Pool Deck	4.8 m <sup>2</sup>
Swimming pool	36 m <sup>2</sup>

**TOTAL AREA 411.8 m<sup>2</sup>**

Plot of Land	803.5 m <sup>2</sup>
Altimetry	14.5

Co-Developer :

MJ Développement  
55 Avenue d'Espagne  
64600 ANGLÈT - FRANCE  
Tel: +33 5 59 03 13 00

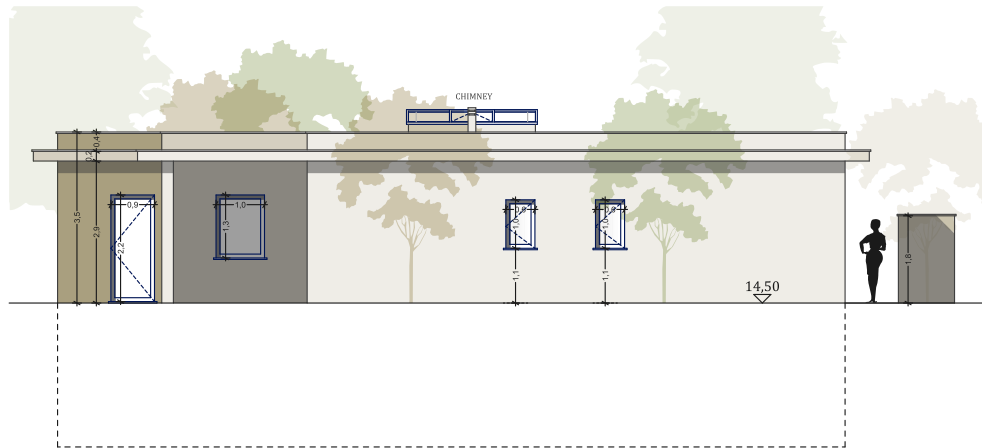
**MJ** DÉVELOPPEMENT  
PROMOTEUR CONSTRUCTEUR

Serip Groupe  
2, avenue de la Liberté  
83120 Sainte-Maxime - FRANCE

  
SERIP GROUPE



**QUINTA DE FARO**  
PRIVATE LUXURY VILLAS  
ALGARVE



Alcado Norte



Alcado Oeste

Kitchen equipment is not contractual. Their position is indicative. Dimensions and areas are given subject to technical construction and execution requirements. The fallout from false ceilings, soffits and pipes are not systematically shown. The thickness of the insulation will be determined by the technical execution study and therefore the data in this plan are only indicative.

Co-Developer :

MJ Développement  
55 Avenue d'Espagne  
64600 ANGLÈT - FRANCE  
Tel: +33 5 59 03 13 00

**MJ** DÉVELOPPEMENT  
PROMOTEUR CONSTRUCTEUR

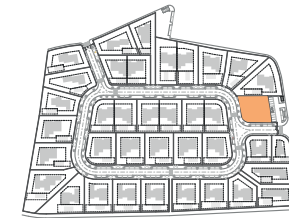
Serip Groupe  
2, avenue de la Liberté  
83120 Sainte-Maxime - FRANCE

  
SERIP GROUPE

## SALES PLAN

VILLA N°18 DOUBLE STOREY

ELEVATIONS



**TOTAL INTERIOR LIVING AREA 325.9 m<sup>2</sup>**

**GROUND FLOOR 159.9 m<sup>2</sup>**

Living	39.7 m <sup>2</sup>
Dining room	16.6 m <sup>2</sup>
Kitchen	13.7 m <sup>2</sup>
Office	5.9 m <sup>2</sup>
Storeroom	4.8 m <sup>2</sup>
Ensuite Bedroom 1	21 m <sup>2</sup>
Ensuite Bedroom 2	20 m <sup>2</sup>
Dressing Ensuite Bedroom 2	3 m <sup>2</sup>
Ensuite Bedroom 3	24.7 m <sup>2</sup>
Dressing Ensuite Bedroom 3	3.4 m <sup>2</sup>
Guest toilet	1.9 m <sup>2</sup>
Lobby, Hallway	5.2 m <sup>2</sup>

**BASEMENT 166 m<sup>2</sup>**

Hallway	16.6 m <sup>2</sup>
Ensuite Bedroom 4	19.4 m <sup>2</sup>
Laundry	8.8 m <sup>2</sup>
Gym, Hammam	37 m <sup>2</sup>
Wine Cellar	12.9 m <sup>2</sup>
Garage	71.3 m <sup>2</sup>
Technical room swim Pool	8.8 m <sup>2</sup>

**TOTAL EXTERIOR AREA 85.9 m<sup>2</sup>**

Patio/Fountain	20.8 m <sup>2</sup>
Covered terrace	24.3 m <sup>2</sup>
Pool Deck	4.8 m <sup>2</sup>
Swimming pool	36 m <sup>2</sup>

**TOTAL AREA 411.8 m<sup>2</sup>**

Plot of Land	803.5 m <sup>2</sup>
Altimetry	14.5