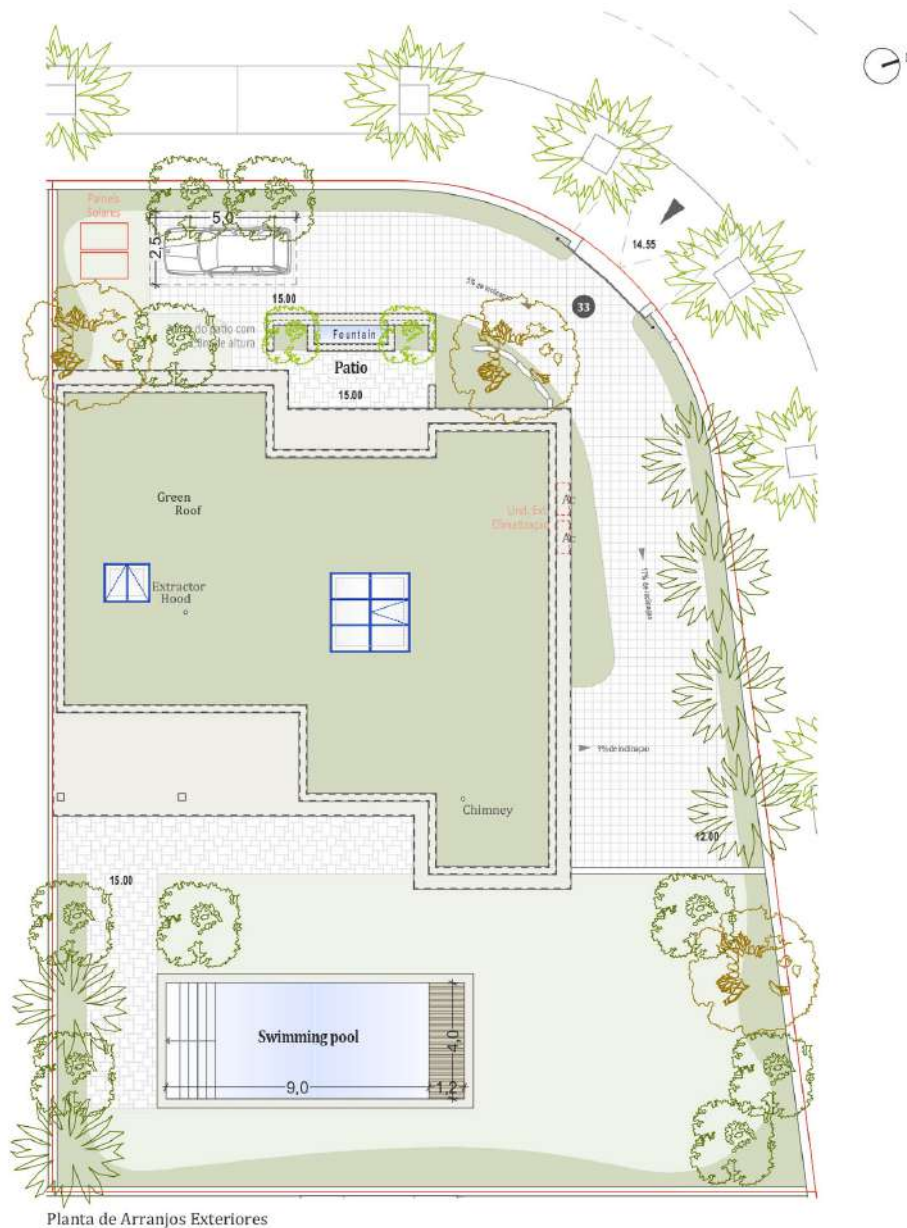


**QUINTA DE FARO**  
PRIVATE LUXURY VILLAS  
ALGARVE



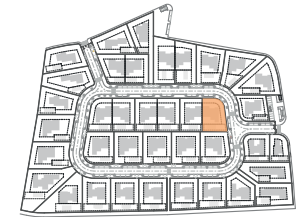
Planta de Arranjos Exteriores

Kitchen equipment is not contractual. Their position is indicative. Dimensions and areas are given subject to technical construction and execution requirements. The fallout from false ceilings, soffits and pipes are not systematically shown. The thickness of the insulation will be determined by the technical execution study and therefore the data in this plan are only indicative.

## SALES PLAN

VILLA N°33 DOUBLE STOREY

SITE PLAN



**TOTAL INTERIOR LIVING AREA 346 m<sup>2</sup>**

**GROUND FLOOR 166.4 m<sup>2</sup>**

Living	40.9 m <sup>2</sup>
Dining room	17.2 m <sup>2</sup>
Kitchen	14.4 m <sup>2</sup>
Office	6.2 m <sup>2</sup>
Storeroom	5.1 m <sup>2</sup>
Ensuite Bedroom 1	20.5 m <sup>2</sup>
Bedroom 1 Dressing	2.8 m <sup>2</sup>
Ensuite Bedroom 2	26.7 m <sup>2</sup>
Bedroom 2 Dressing	4.4 m <sup>2</sup>
Ensuite Bedroom 3	20.8 m <sup>2</sup>
Guest toilet	1.9 m <sup>2</sup>
Lobby Entrance Hall	5.5 m <sup>2</sup>

**BASEMENT 179.6 m<sup>2</sup>**

Ensuite Bedroom 4	20.5 m <sup>2</sup>
Ensuite Bedroom 5	27.3 m <sup>2</sup>
Hallway	17.4 m <sup>2</sup>
Laundry	9.5 m <sup>2</sup>
Gym	36.6 m <sup>2</sup>
Wine Cellar	6.7 m <sup>2</sup>
Garage	51.1 m <sup>2</sup>
Technical room swim Pool	10.5 m <sup>2</sup>

**TOTAL EXTERIOR AREA 88.1 m<sup>2</sup>**

Patio/Fountain	22.7 m <sup>2</sup>
Covered terrace	24.6 m <sup>2</sup>
Pool Deck	4.8 m <sup>2</sup>
Swimming pool	36 m <sup>2</sup>

**TOTAL AREA 434.1 m<sup>2</sup>**

Plot of Land	796m <sup>2</sup>
Altimetry	15

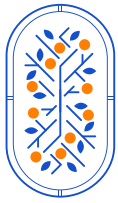
Co-Developer :

MJ Développement  
52 avenue du 8 Mai 1945  
64100 BAYONNE - FRANCE  
Tel: +33 5 59 03 13 00

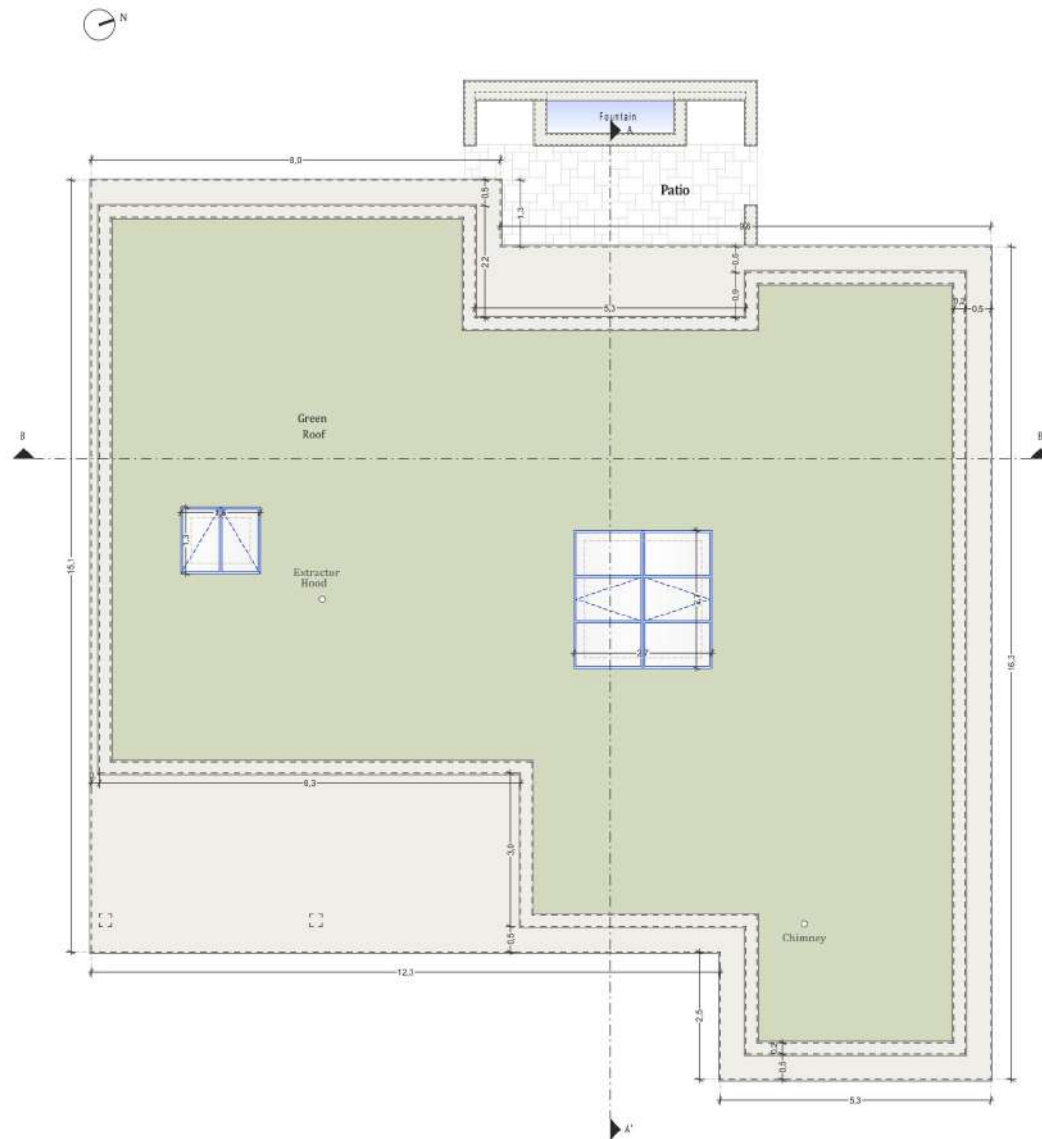
**MJ** DÉVELOPPEMENT  
PROMOTEUR CONSTRUCTEUR

Serip Groupe  
2, avenue de la Liberté  
83120 Sainte-Maxime - FRANCE

  
**SERIP GROUPE**



**QUINTA DE FARO**  
— PRIVATE LUXURY VILLAS —  
ALGARVE



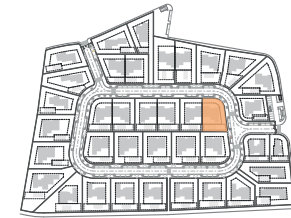
Planta de Cobertura

Kitchen equipment is not contractual. Their position is indicative. Dimensions and areas are given subject to technical construction and execution requirements. The fallout from false ceilings, soffits and pipes are not systematically shown. The thickness of the insulation will be determined by the technical execution study and therefore the data in this plan are only indicative.

## SALES PLAN

VILLA N°33 DOUBLE STOREY

FLOOR COVERING PLAN



**TOTAL INTERIOR LIVING AREA 346 m<sup>2</sup>**

**GROUND FLOOR 166.4 m<sup>2</sup>**

Living	40.9 m <sup>2</sup>
Dining room	17.2 m <sup>2</sup>
Kitchen	14.4 m <sup>2</sup>
Office	6.2 m <sup>2</sup>
Storeroom	5.1 m <sup>2</sup>
Ensuite Bedroom 1	20.5 m <sup>2</sup>
Bedroom 1 Dressing	2.8 m <sup>2</sup>
Ensuite Bedroom 2	26.7 m <sup>2</sup>
Bedroom 2 Dressing	4.4 m <sup>2</sup>
Ensuite Bedroom 3	20.8 m <sup>2</sup>
Guest toilet	1.9 m <sup>2</sup>
Lobby Entrance Hall	5.5 m <sup>2</sup>

**BASEMENT 179.6 m<sup>2</sup>**

Ensuite Bedroom 4	20.5 m <sup>2</sup>
Ensuite Bedroom 5	27.3 m <sup>2</sup>
Hallway	17.4 m <sup>2</sup>
Laundry	9.5 m <sup>2</sup>
Gym	36.6 m <sup>2</sup>
Wine Cellar	6.7 m <sup>2</sup>
Garage	51.1 m <sup>2</sup>
Technical room swim Pool	10.5 m <sup>2</sup>

**TOTAL EXTERIOR AREA 88.1 m<sup>2</sup>**

Patio/Fountain	22.7 m <sup>2</sup>
Covered terrace	24.6 m <sup>2</sup>
Pool Deck	4.8 m <sup>2</sup>
Swimming pool	36 m <sup>2</sup>

**TOTAL AREA 434.1 m<sup>2</sup>**

Plot of Land	796m <sup>2</sup>
Altimetry	15

MJ Développement  
52 avenue du 8 Mai 1945  
64100 BAYONNE - FRANCE  
Tel: +33 5 59 03 13 00

**MJ** DÉVELOPPEMENT  
PROMOTEUR CONSTRUCTEUR

Serip Groupe  
2, avenue de la Liberté  
83120 Sainte-Maxime - FRANCE

  
**SERIP GROUPE**



**QUINTA DE FARO**  
PRIVATE LUXURY VILLAS  
ALGARVE



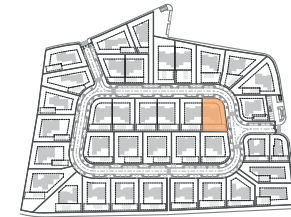
GROUND FLOOR

Kitchen equipment is not contractual. Their position is indicative. Dimensions and areas are given subject to technical construction and execution requirements. The fallout from false ceilings, soffits and pipes are not systematically shown. The thickness of the insulation will be determined by the technical execution study and therefore the data in this plan are only indicative.

## SALES PLAN

VILLA N°33 DOUBLE STOREY

GROUND FLOOR



**TOTAL INTERIOR LIVING AREA 346 m<sup>2</sup>**

**GROUND FLOOR 166.4 m<sup>2</sup>**

Living	40.9 m <sup>2</sup>
Dining room	17.2 m <sup>2</sup>
Kitchen	14.4 m <sup>2</sup>
Office	6.2 m <sup>2</sup>
Storeroom	5.1 m <sup>2</sup>
Ensuite Bedroom 1	20.5 m <sup>2</sup>
Bedroom 1 Dressing	2.8 m <sup>2</sup>
Ensuite Bedroom 2	26.7 m <sup>2</sup>
Bedroom 2 Dressing	4.4 m <sup>2</sup>
Ensuite Bedroom 3	20.8 m <sup>2</sup>
Guest toilet	1.9 m <sup>2</sup>
Lobby Entrance Hall	5.5 m <sup>2</sup>

**BASEMENT 179.6 m<sup>2</sup>**

Ensuite Bedroom 4	20.5 m <sup>2</sup>
Ensuite Bedroom 5	27.3 m <sup>2</sup>
Hallway	17.4 m <sup>2</sup>
Laundry	9.5 m <sup>2</sup>
Gym	36.6 m <sup>2</sup>
Wine Cellar	6.7 m <sup>2</sup>
Garage	51.1 m <sup>2</sup>
Technical room swim Pool	10.5 m <sup>2</sup>

**TOTAL EXTERIOR AREA 88.1 m<sup>2</sup>**

Patio/Fountain	22.7 m <sup>2</sup>
Covered terrace	24.6 m <sup>2</sup>
Pool Deck	4.8 m <sup>2</sup>
Swimming pool	36 m <sup>2</sup>

**TOTAL AREA 434.1 m<sup>2</sup>**

Plot of Land	796m <sup>2</sup>
Altimetry	15

MJ Développement  
52 avenue du 8 Mai 1945  
64100 BAYONNE - FRANCE  
Tel: +33 5 59 03 13 00

**MJ** DÉVELOPPEMENT  
PROMOTEUR CONSTRUCTEUR

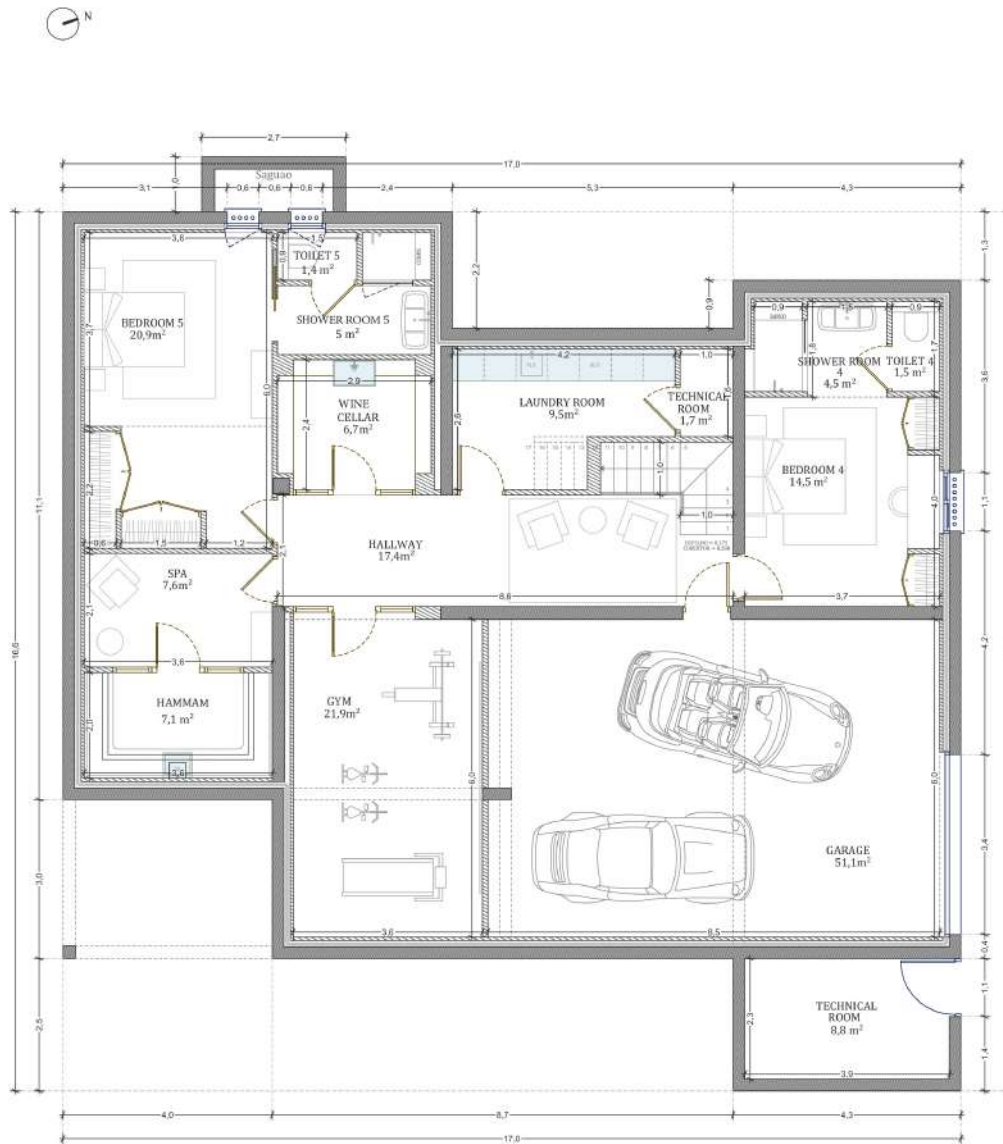
Serip Groupe  
2, avenue de la Liberté  
83120 Sainte-Maxime - FRANCE



SERIP GROUPE



**QUINTA DE FARO**  
PRIVATE LUXURY VILLAS  
ALGARVE



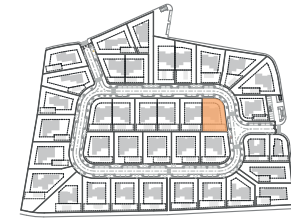
BASEMENT

Kitchen equipment is not contractual. Their position is indicative. Dimensions and areas are given subject to technical construction and execution requirements. The fallout from false ceilings, soffits and pipes are not systematically shown. The thickness of the insulation will be determined by the technical execution study and therefore the data in this plan are only indicative.

## SALES PLAN

VILLA N°33 DOUBLE STOREY

BASEMENT



**TOTAL INTERIOR LIVING AREA 346 m<sup>2</sup>**

**GROUND FLOOR 166.4 m<sup>2</sup>**

Living	40.9 m <sup>2</sup>
Dining room	17.2 m <sup>2</sup>
Kitchen	14.4 m <sup>2</sup>
Office	6.2 m <sup>2</sup>
Storeroom	5.1 m <sup>2</sup>
Ensuite Bedroom 1	20.5 m <sup>2</sup>
Bedroom 1 Dressing	2.8 m <sup>2</sup>
Ensuite Bedroom 2	26.7 m <sup>2</sup>
Bedroom 2 Dressing	4.4 m <sup>2</sup>
Ensuite Bedroom 3	20.8 m <sup>2</sup>
Guest toilet	1.9 m <sup>2</sup>
Lobby Entrance Hall	5.5 m <sup>2</sup>

**BASEMENT 179.6 m<sup>2</sup>**

Ensuite Bedroom 4	20.5 m <sup>2</sup>
Ensuite Bedroom 5	27.3 m <sup>2</sup>
Hallway	17.4 m <sup>2</sup>
Laundry	9.5 m <sup>2</sup>
Gym	36.6 m <sup>2</sup>
Wine Cellar	6.7 m <sup>2</sup>
Garage	51.1 m <sup>2</sup>
Technical room swim Pool	10.5 m <sup>2</sup>

**TOTAL EXTERIOR AREA 88.1 m<sup>2</sup>**

Patio/Fountain	22.7 m <sup>2</sup>
Covered terrace	24.6 m <sup>2</sup>
Pool Deck	4.8 m <sup>2</sup>
Swimming pool	36 m <sup>2</sup>

**TOTAL AREA 434.1 m<sup>2</sup>**

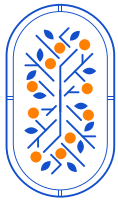
Plot of Land	796m <sup>2</sup>
Altimetry	15

MJ Développement  
52 avenue du 8 Mai 1945  
64100 BAYONNE - FRANCE  
Tel: +33 5 59 03 13 00

**MJ** DÉVELOPPEMENT  
PROMOTEUR CONSTRUCTEUR

Serip Groupe  
2, avenue de la Liberté  
83120 Sainte-Maxime - FRANCE

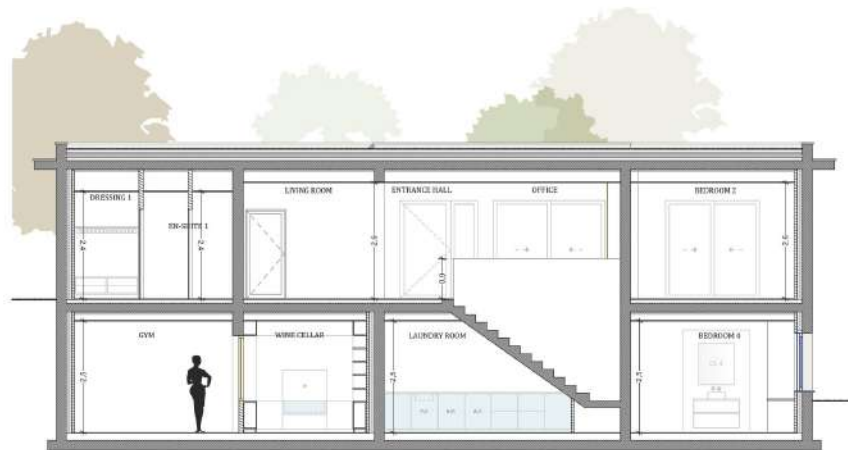
  
**SERIP GROUPE**



**QUINTA DE FARO**  
PRIVATE LUXURY VILLAS  
ALGARVE

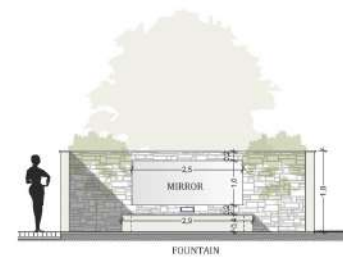


SECTION AA'



SECTION BB'

Kitchen equipment is not contractual. Their position is indicative. Dimensions and areas are given subject to technical construction and execution requirements. The fallout from false ceilings, soffits and pipes are not systematically shown. The thickness of the insulation will be determined by the technical execution study and therefore the data in this plan are only indicative.



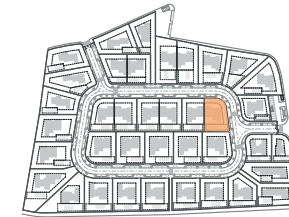
PATIO

REQUERENTE	Paraisos Heroicos, Lda.
LOCALIZAÇÃO	Lugar <small>Fr</small>
	Marchil - Montenegro <small>Mo</small>
DESIGNAÇÃO	Cortes
	Coordenador <small>Co</small>
	Autor <small>Au</small>

## SALES PLAN

VILLA N°33 DOUBLE STOREY

SECTIONAL PLAN



**TOTAL INTERIOR LIVING AREA 346 m<sup>2</sup>**

**GROUND FLOOR 166.4 m<sup>2</sup>**

Living	40.9 m <sup>2</sup>
Dining room	17.2 m <sup>2</sup>
Kitchen	14.4 m <sup>2</sup>
Office	6.2 m <sup>2</sup>
Storeroom	5.1 m <sup>2</sup>
Ensuite Bedroom 1	20.5 m <sup>2</sup>
Bedroom 1 Dressing	2.8 m <sup>2</sup>
Ensuite Bedroom 2	26.7 m <sup>2</sup>
Bedroom 2 Dressing	4.4 m <sup>2</sup>
Ensuite Bedroom 3	20.8 m <sup>2</sup>
Guest toilet	1.9 m <sup>2</sup>
Lobby Entrance Hall	5.5 m <sup>2</sup>

**BASEMENT 179.6 m<sup>2</sup>**

Ensuite Bedroom 4	20.5 m <sup>2</sup>
Ensuite Bedroom 5	27.3 m <sup>2</sup>
Hallway	17.4 m <sup>2</sup>
Laundry	9.5 m <sup>2</sup>
Gym	36.6 m <sup>2</sup>
Wine Cellar	6.7 m <sup>2</sup>
Garage	51.1 m <sup>2</sup>
Technical room swim Pool	10.5 m <sup>2</sup>

**TOTAL EXTERIOR AREA 88.1 m<sup>2</sup>**

Patio/Fountain	22.7 m <sup>2</sup>
Covered terrace	24.6 m <sup>2</sup>
Pool Deck	4.8 m <sup>2</sup>
Swimming pool	36 m <sup>2</sup>

**TOTAL AREA 434.1 m<sup>2</sup>**

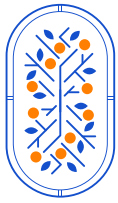
Plot of Land	796m <sup>2</sup>
Altimetry	15

MJ Développement  
52 avenue du 8 Mai 1945  
64100 BAYONNE - FRANCE  
Tel: +33 5 59 03 13 00

**MJ** DÉVELOPPEMENT  
PROMOTEUR CONSTRUCTEUR

Serip Groupe  
2, avenue de la Liberté  
83120 Sainte-Maxime - FRANCE

  
**SERIP GROUPE**



**QUINTA DE FARO**  
PRIVATE LUXURY VILLAS  
ALGARVE



NORTH



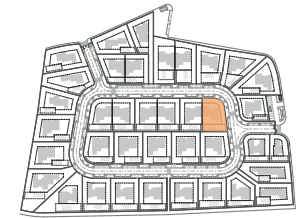
EAST

Kitchen equipment is not contractual. Their position is indicative. Dimensions and areas are given subject to technical construction and execution requirements. The fallout from false ceilings, soffits and pipes are not systematically shown. The thickness of the insulation will be determined by the technical execution study and therefore the data in this plan are only indicative.

## SALES PLAN

VILLA N°33 DOUBLE STOREY

ELEVATIONS



**TOTAL INTERIOR LIVING AREA 346 m<sup>2</sup>**

**GROUND FLOOR 166.4 m<sup>2</sup>**

Living	40.9 m <sup>2</sup>
Dining room	17.2 m <sup>2</sup>
Kitchen	14.4 m <sup>2</sup>
Office	6.2 m <sup>2</sup>
Storeroom	5.1 m <sup>2</sup>
Ensuite Bedroom 1	20.5 m <sup>2</sup>
Bedroom 1 Dressing	2.8 m <sup>2</sup>
Ensuite Bedroom 2	26.7 m <sup>2</sup>
Bedroom 2 Dressing	4.4 m <sup>2</sup>
Ensuite Bedroom 3	20.8 m <sup>2</sup>
Guest toilet	1.9 m <sup>2</sup>
Lobby Entrance Hall	5.5 m <sup>2</sup>

**BASEMENT 179.6 m<sup>2</sup>**

Ensuite Bedroom 4	20.5 m <sup>2</sup>
Ensuite Bedroom 5	27.3 m <sup>2</sup>
Hallway	17.4 m <sup>2</sup>
Laundry	9.5 m <sup>2</sup>
Gym	36.6 m <sup>2</sup>
Wine Cellar	6.7 m <sup>2</sup>
Garage	51.1 m <sup>2</sup>
Technical room swim Pool	10.5 m <sup>2</sup>

**TOTAL EXTERIOR AREA 88.1 m<sup>2</sup>**

Patio/Fountain	22.7 m <sup>2</sup>
Covered terrace	24.6 m <sup>2</sup>
Pool Deck	4.8 m <sup>2</sup>
Swimming pool	36 m <sup>2</sup>

**TOTAL AREA 434.1 m<sup>2</sup>**

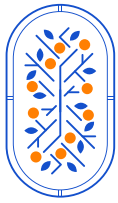
Plot of Land	796m <sup>2</sup>
Altimetry	15

MJ Développement  
52 avenue du 8 Mai 1945  
64100 BAYONNE - FRANCE  
Tel: +33 5 59 03 13 00

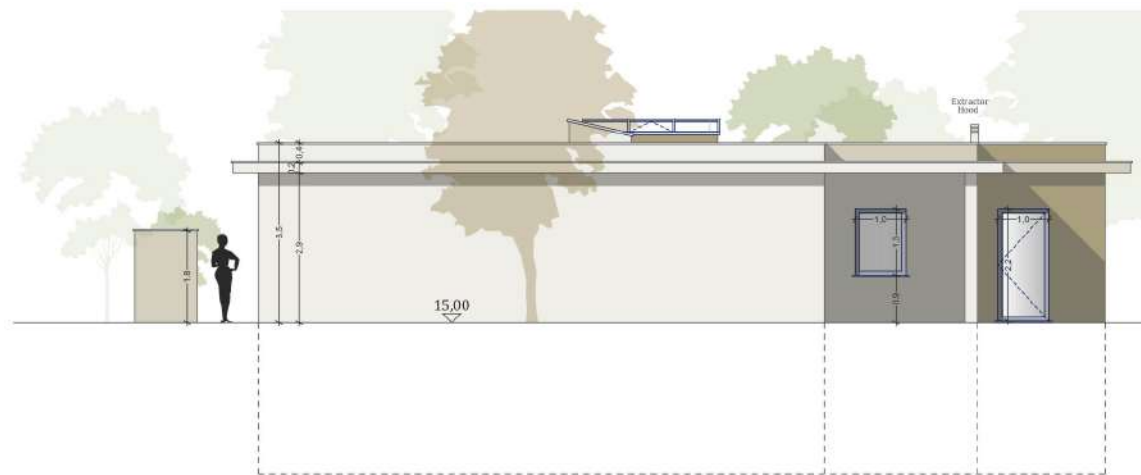
**MJ** DÉVELOPPEMENT  
PROMOTEUR CONSTRUCTEUR

Serip Groupe  
2, avenue de la Liberté  
83120 Sainte-Maxime - FRANCE

  
**SERIP GROUPE**



**QUINTA DE FARO**  
PRIVATE LUXURY VILLAS  
ALGARVE



SOUTH



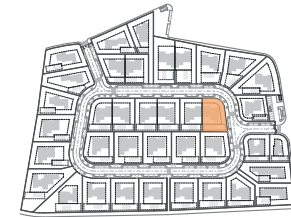
WEST

Kitchen equipment is not contractual. Their position is indicative. Dimensions and areas are given subject to technical construction and execution requirements. The fallout from false ceilings, soffits and pipes are not systematically shown. The thickness of the insulation will be determined by the technical execution study and therefore the data in this plan are only indicative.

## SALES PLAN

VILLA N°33 DOUBLE STOREY

ELEVATIONS



**TOTAL INTERIOR LIVING AREA 346 m<sup>2</sup>**

**GROUND FLOOR 166.4 m<sup>2</sup>**

Living	40.9 m <sup>2</sup>
Dining room	17.2 m <sup>2</sup>
Kitchen	14.4 m <sup>2</sup>
Office	6.2 m <sup>2</sup>
Storeroom	5.1 m <sup>2</sup>
Ensuite Bedroom 1	20.5 m <sup>2</sup>
Bedroom 1 Dressing	2.8 m <sup>2</sup>
Ensuite Bedroom 2	26.7 m <sup>2</sup>
Bedroom 2 Dressing	4.4 m <sup>2</sup>
Ensuite Bedroom 3	20.8 m <sup>2</sup>
Guest toilet	1.9 m <sup>2</sup>
Lobby Entrance Hall	5.5 m <sup>2</sup>

**BASEMENT 179.6 m<sup>2</sup>**

Ensuite Bedroom 4	20.5 m <sup>2</sup>
Ensuite Bedroom 5	27.3 m <sup>2</sup>
Hallway	17.4 m <sup>2</sup>
Laundry	9.5 m <sup>2</sup>
Gym	36.6 m <sup>2</sup>
Wine Cellar	6.7 m <sup>2</sup>
Garage	51.1 m <sup>2</sup>
Technical room swim Pool	10.5 m <sup>2</sup>

**TOTAL EXTERIOR AREA 88.1 m<sup>2</sup>**

Patio/Fountain	22.7 m <sup>2</sup>
Covered terrace	24.6 m <sup>2</sup>
Pool Deck	4.8 m <sup>2</sup>
Swimming pool	36 m <sup>2</sup>

**TOTAL AREA 434.1 m<sup>2</sup>**

Plot of Land	796m <sup>2</sup>
Altimetry	15

MJ Développement  
52 avenue du 8 Mai 1945  
64100 BAYONNE - FRANCE  
Tel: +33 5 59 03 13 00

**MJ** DÉVELOPPEMENT  
PROMOTEUR CONSTRUCTEUR

Serip Groupe  
2, avenue de la Liberté  
83120 Sainte-Maxime - FRANCE

  
**SERIP GROUPE**