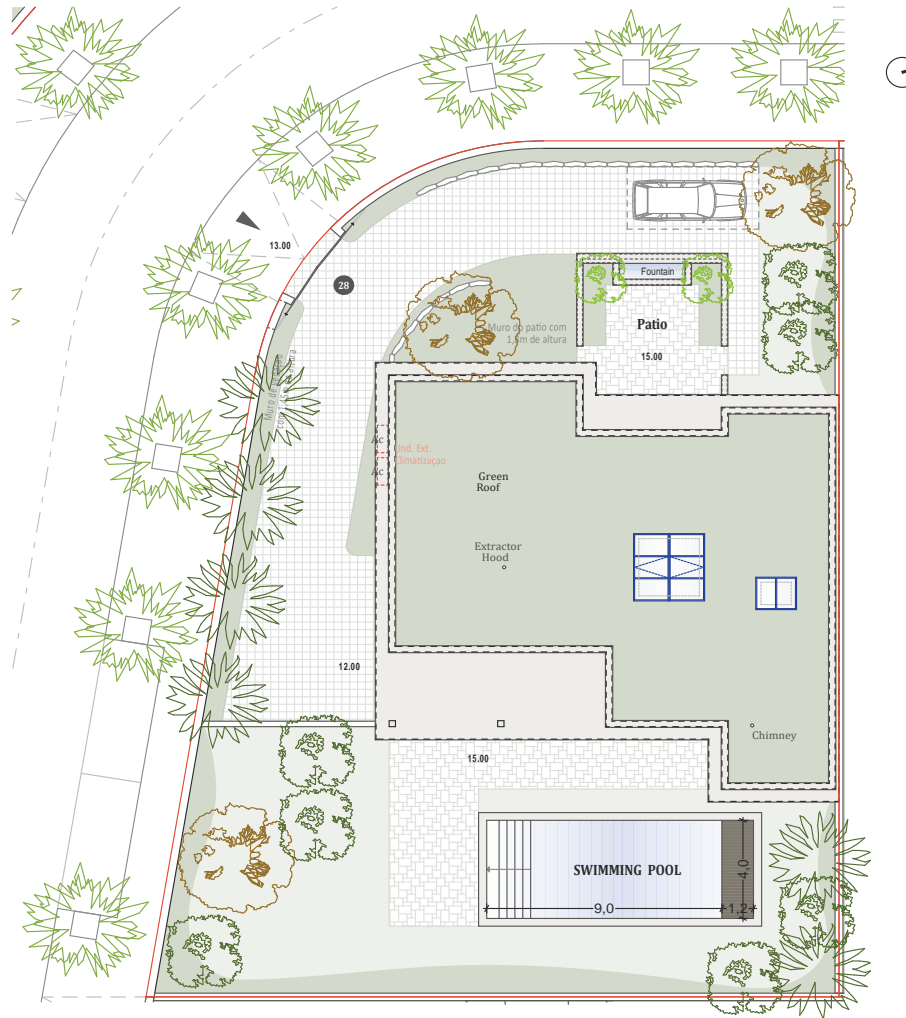




**QUINTA DE FARO**  
— PRIVATE LUXURY VILLAS —  
ALGARVE



Kitchen equipment is not contractual. Their position is indicative. Dimensions and areas are given subject to technical construction and execution requirements. The fallout from false ceilings, soffits and pipes are not systematically shown. The thickness of the insulation will be determined by the technical execution study and therefore the data in this plan are only indicative.

Co-Developer :

MJ Développement  
52 avenue du 8 Mai 1945  
64100 BAYONNE- FRANCE  
Tel: +33 5 59 03 13 00

**MJ** DÉVELOPPEMENT  
PROMOTEUR CONSTRUCTEUR

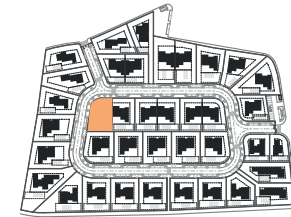
Serip Groupe  
2, avenue de la Liberté  
83120 Sainte-Maxime - FRANCE

  
**SERIP GROUPE**

## SALES PLAN

VILLA N°28 DOUBLE STOREY

SITE PLAN



**TOTAL INTERIOR LIVING AREA 358.4 m<sup>2</sup>**

**GROUND FLOOR 166.4 m<sup>2</sup>**

Living	40.9 m <sup>2</sup>
Dining room	17.2 m <sup>2</sup>
Kitchen	14.4 m <sup>2</sup>
Office	6.2 m <sup>2</sup>
Storeroom Pantry	5.1 m <sup>2</sup>
Ensuite Bedroom 1	20.5 m <sup>2</sup>
Bedroom 1 Dressing	2.8 m <sup>2</sup>
Ensuite Bedroom 2	26.7 m <sup>2</sup>
Bedroom 2 Dressing	4.4 m <sup>2</sup>
Ensuite Bedroom 3	20.8 m <sup>2</sup>
Guest toilet	1.9 m <sup>2</sup>
Lobby Entrance Hall	5.5 m <sup>2</sup>

**BASEMENT 192 m<sup>2</sup>**

Ensuite Bedroom 4	18.3 m <sup>2</sup>
Ensuite Bedroom 5	20.5 m <sup>2</sup>
Hallway	19 m <sup>2</sup>
Laundry	6.9 m <sup>2</sup>
Gym, Hammam	37.5 m <sup>2</sup>
Wine Cellar	10.1 m <sup>2</sup>
Garage	58.8 m <sup>2</sup>
Technical rooms	20.9 m <sup>2</sup>

**TOTAL EXTERIOR AREA 101.1 m<sup>2</sup>**

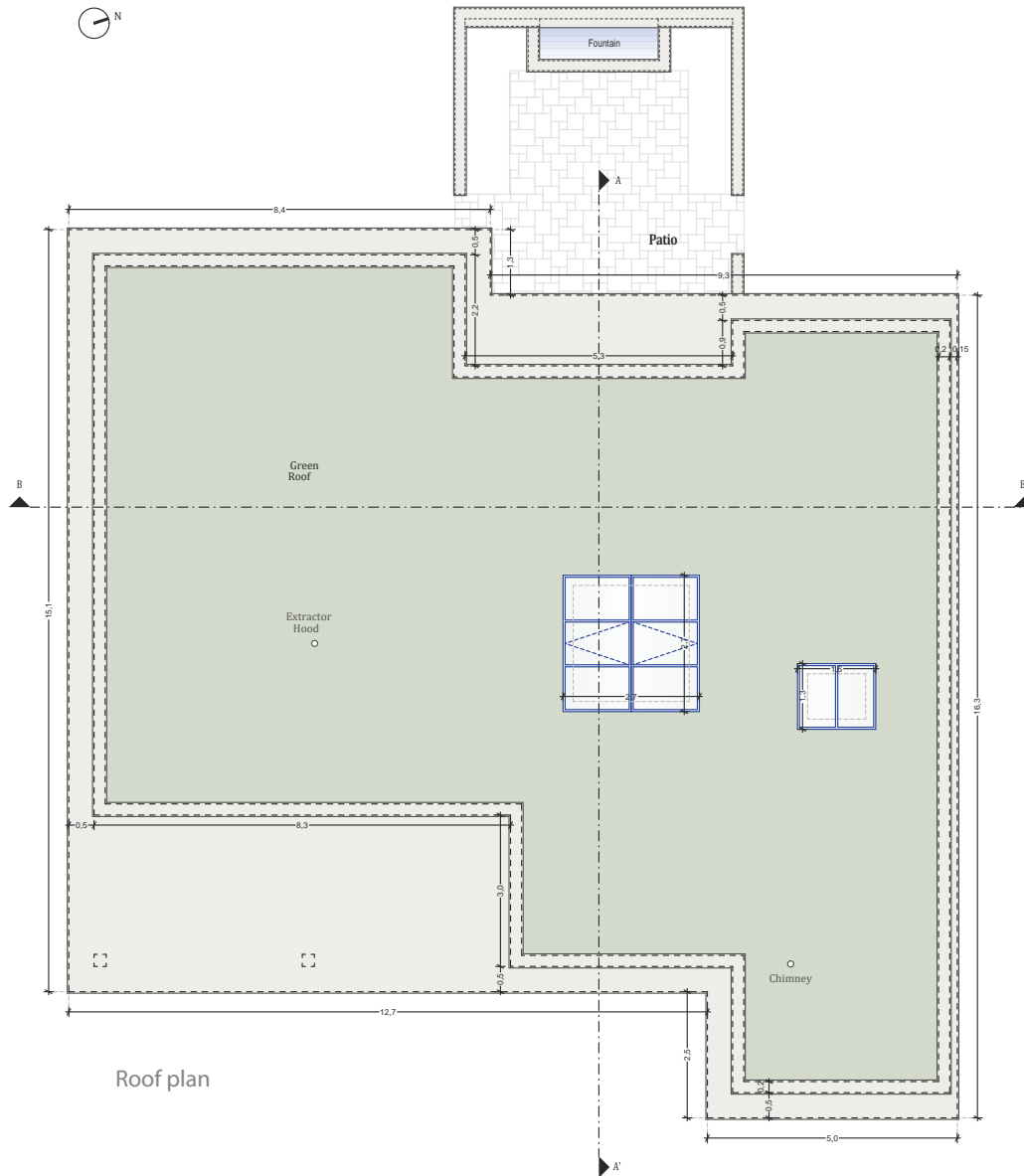
Patio/Fountain	35.7 m <sup>2</sup>
Covered terrace	24.6 m <sup>2</sup>
Pool Deck	4.8 m <sup>2</sup>
Swimming pool	36 m <sup>2</sup>

**TOTAL AREA 459.5 m<sup>2</sup>**

Plot of Land	789.7 m <sup>2</sup>
Altimetry	15



**QUINTA DE FARO**  
PRIVATE LUXURY VILLAS  
ALGARVE



Roof plan

Kitchen equipment is not contractual. Their position is indicative. Dimensions and areas are given subject to technical construction and execution requirements.  
The fallout from false ceilings, soffits and pipes are not systematically shown.  
The thickness of the insulation will be determined by the technical execution study and therefore the data in this plan are only indicative.

Co-Developer :

MJ Développement  
52 avenue du 8 Mai 1945  
64100 BAYONNE- FRANCE  
Tel: +33 5 59 03 13 00

**MJ** DÉVELOPPEMENT  
PROMOTEUR CONSTRUCTEUR

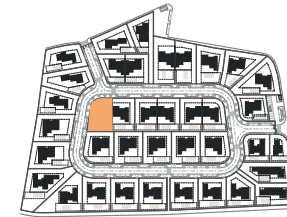
Serip Groupe  
2, avenue de la Liberté  
83120 Sainte-Maxime - FRANCE

  
**SERIP GROUPE**

## SALES PLAN

VILLA N°28 DOUBLE STOREY

FLOOR COVERING PLAN



**TOTAL INTERIOR LIVING AREA 358.4 m<sup>2</sup>**

**GROUND FLOOR 166.4 m<sup>2</sup>**

Living	40.9 m <sup>2</sup>
Dining room	17.2 m <sup>2</sup>
Kitchen	14.4 m <sup>2</sup>
Office	6.2 m <sup>2</sup>
Storeroom Pantry	5.1 m <sup>2</sup>
Ensuite Bedroom 1	20.5 m <sup>2</sup>
Bedroom 1 Dressing	2.8 m <sup>2</sup>
Ensuite Bedroom 2	26.7 m <sup>2</sup>
Bedroom 2 Dressing	4.4 m <sup>2</sup>
Ensuite Bedroom 3	20.8 m <sup>2</sup>
Guest toilet	1.9 m <sup>2</sup>
Lobby Entrance Hall	5.5 m <sup>2</sup>

**BASEMENT 192 m<sup>2</sup>**

Ensuite Bedroom 4	18.3 m <sup>2</sup>
Ensuite Bedroom 5	20.5 m <sup>2</sup>
Hallway	19 m <sup>2</sup>
Laundry	6.9 m <sup>2</sup>
Gym, Hammam	37.5 m <sup>2</sup>
Wine Cellar	10.1 m <sup>2</sup>
Garage	58.8 m <sup>2</sup>
Technical rooms	20.9 m <sup>2</sup>

**TOTAL EXTERIOR AREA 101.1 m<sup>2</sup>**

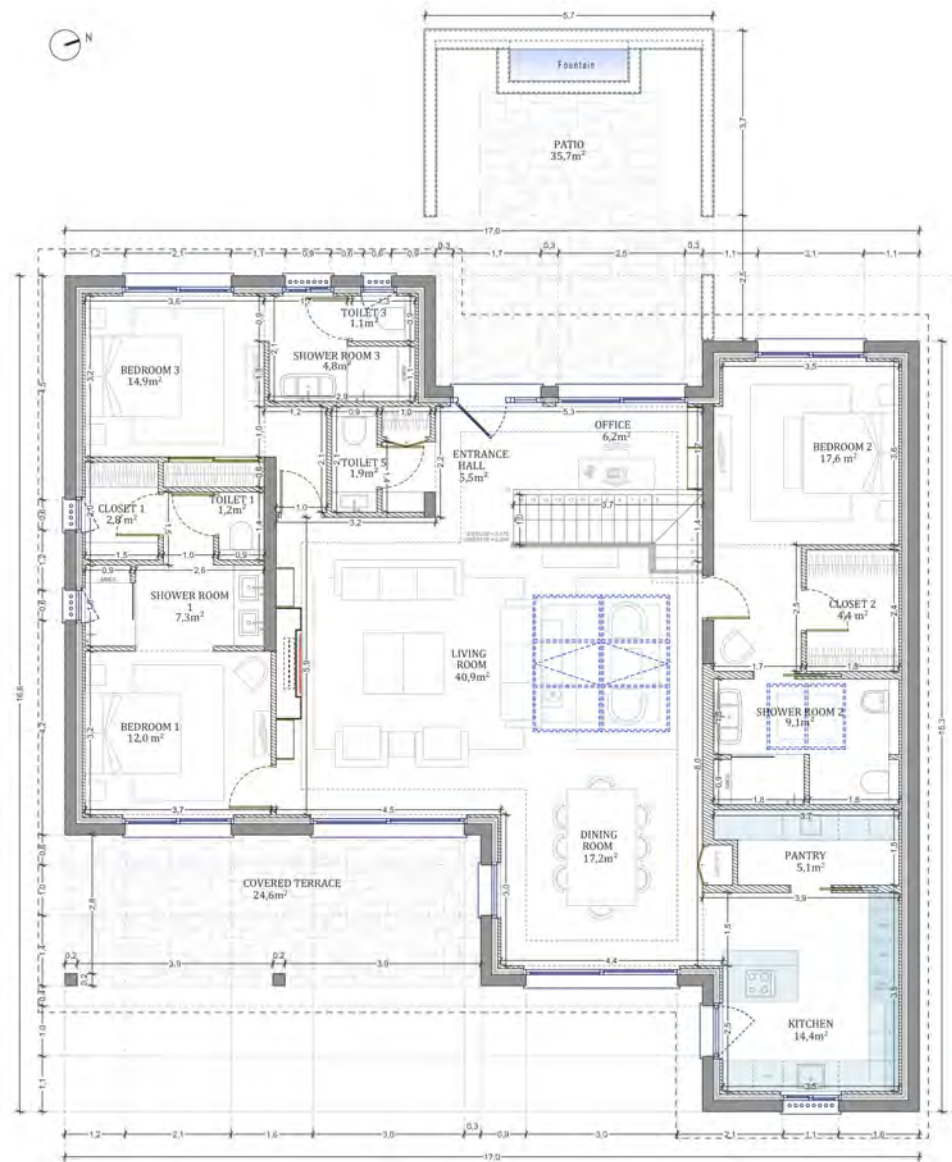
Patio/Fountain	35.7 m <sup>2</sup>
Covered terrace	24.6 m <sup>2</sup>
Pool Deck	4.8 m <sup>2</sup>
Swimming pool	36 m <sup>2</sup>

**TOTAL AREA 459.5 m<sup>2</sup>**

Plot of Land	789.7 m <sup>2</sup>
Altimetry	15



**QUINTA DE FARO**  
PRIVATE LUXURY VILLAS  
ALGARVE



GROUND FLOOR

Kitchen equipment is not contractual. Their position is indicative. Dimensions and areas are given subject to technical construction and execution requirements. The fallout from false ceilings, soffits and pipes are not systematically shown. The thickness of the insulation will be determined by the technical execution study and therefore the data in this plan are only indicative.

Co-Developer :

MJ Développement  
52 avenue du 8 Mai 1945  
64100 BAYONNE- FRANCE  
Tel: +33 5 59 03 13 00

**MJ** DÉVELOPPEMENT  
PROMOTEUR CONSTRUCTEUR

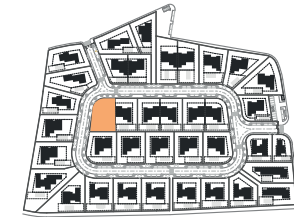
Serip Groupe  
2, avenue de la Liberté  
83120 Sainte-Maxime - FRANCE

  
**SERIP GROUPE**

## SALES PLAN

VILLA N°28 DOUBLE STOREY

GROUND FLOOR



**TOTAL INTERIOR LIVING AREA 358.4 m<sup>2</sup>**

**GROUND FLOOR 166.4 m<sup>2</sup>**

Living	40.9 m <sup>2</sup>
Dining room	17.2 m <sup>2</sup>
Kitchen	14.4 m <sup>2</sup>
Office	6.2 m <sup>2</sup>
Storeroom Pantry	5.1 m <sup>2</sup>
Ensuite Bedroom 1	20.5 m <sup>2</sup>
Bedroom 1 Dressing	2.8 m <sup>2</sup>
Ensuite Bedroom 2	26.7 m <sup>2</sup>
Bedroom 2 Dressing	4.4 m <sup>2</sup>
Ensuite Bedroom 3	20.8 m <sup>2</sup>
Guest toilet	1.9 m <sup>2</sup>
Lobby Entrance Hall	5.5 m <sup>2</sup>

**BASEMENT 192 m<sup>2</sup>**

Ensuite Bedroom 4	18.3 m <sup>2</sup>
Ensuite Bedroom 5	20.5 m <sup>2</sup>
Hallway	19 m <sup>2</sup>
Laundry	6.9 m <sup>2</sup>
Gym, Hammam	37.5 m <sup>2</sup>
Wine Cellar	10.1 m <sup>2</sup>
Garage	58.8 m <sup>2</sup>
Technical rooms	20.9 m <sup>2</sup>

**TOTAL EXTERIOR AREA 101.1 m<sup>2</sup>**

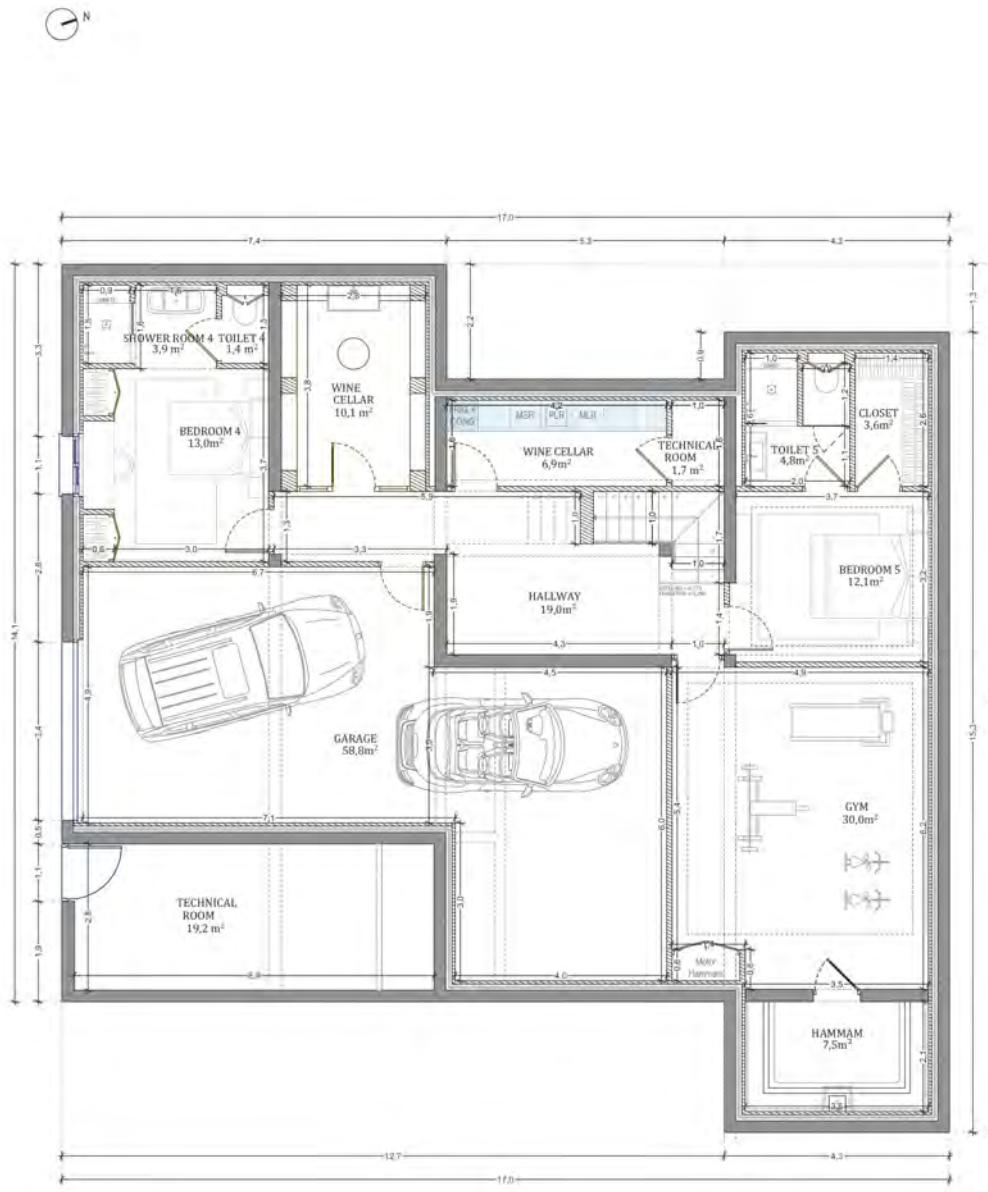
Patio/Fountain	35.7 m <sup>2</sup>
Covered terrace	24.6 m <sup>2</sup>
Pool Deck	4.8 m <sup>2</sup>
Swimming pool	36 m <sup>2</sup>

**TOTAL AREA 459.5 m<sup>2</sup>**

Plot of Land	789.7 m <sup>2</sup>
Altimetry	15



**QUINTA DE FARO**  
PRIVATE LUXURY VILLAS  
ALGARVE



BASEMENT

Kitchen equipment is not contractual. Their position is indicative. Dimensions and areas are given subject to technical construction and execution requirements. The fallout from false ceilings, soffits and pipes are not systematically shown. The thickness of the insulation will be determined by the technical execution study and therefore the data in this plan are only indicative.

Co-Developer :

MJ Développement  
52 avenue du 8 Mai 1945  
64100 BAYONNE- FRANCE  
Tel: +33 5 59 03 13 00

**MJ** DÉVELOPPEMENT  
PROMOTEUR CONSTRUCTEUR

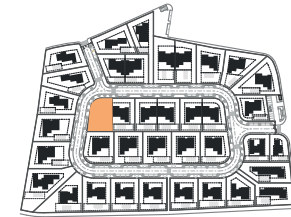
Serip Groupe  
2, avenue de la Liberté  
83120 Sainte-Maxime - FRANCE

  
**SERIP GROUPE**

## SALES PLAN

VILLA N°28 DOUBLE STOREY

BASEMENT



**TOTAL INTERIOR LIVING AREA 358.4 m<sup>2</sup>**

**GROUND FLOOR 166.4 m<sup>2</sup>**

Living	40.9 m <sup>2</sup>
Dining room	17.2 m <sup>2</sup>
Kitchen	14.4 m <sup>2</sup>
Office	6.2 m <sup>2</sup>
Storeroom Pantry	5.1 m <sup>2</sup>
Ensuite Bedroom 1	20.5 m <sup>2</sup>
Bedroom 1 Dressing	2.8 m <sup>2</sup>
Ensuite Bedroom 2	26.7 m <sup>2</sup>
Bedroom 2 Dressing	4.4 m <sup>2</sup>
Ensuite Bedroom 3	20.8 m <sup>2</sup>
Guest toilet	1.9 m <sup>2</sup>
Lobby Entrance Hall	5.5 m <sup>2</sup>

**BASEMENT 192 m<sup>2</sup>**

Ensuite Bedroom 4	18.3 m <sup>2</sup>
Ensuite Bedroom 5	20.5 m <sup>2</sup>
Hallway	19 m <sup>2</sup>
Laundry	6.9 m <sup>2</sup>
Gym, Hammam	37.5 m <sup>2</sup>
Wine Cellar	10.1 m <sup>2</sup>
Garage	58.8 m <sup>2</sup>
Technical rooms	20.9 m <sup>2</sup>

**TOTAL EXTERIOR AREA 101.1 m<sup>2</sup>**

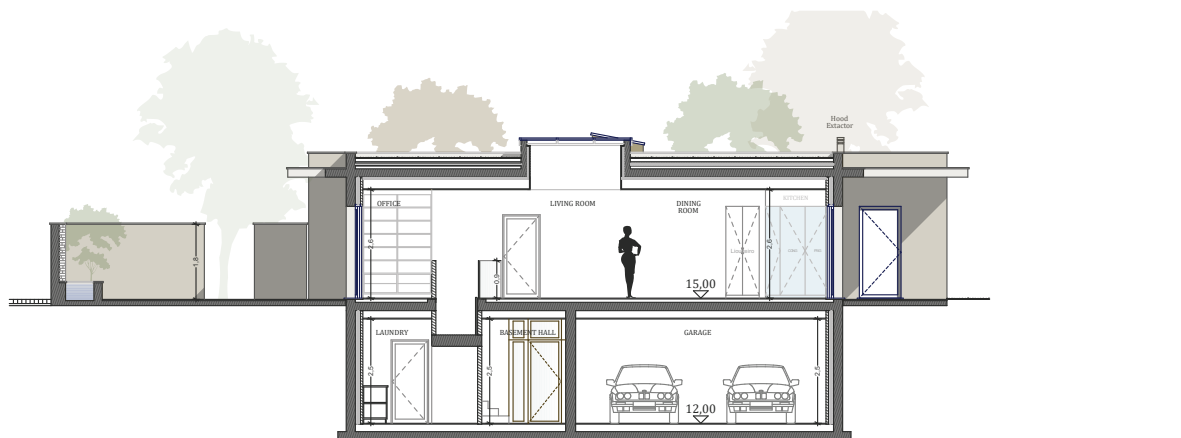
Patio/Fountain	35.7 m <sup>2</sup>
Covered terrace	24.6 m <sup>2</sup>
Pool Deck	4.8 m <sup>2</sup>
Swimming pool	36 m <sup>2</sup>

**TOTAL AREA 459.5 m<sup>2</sup>**

Plot of Land	789.7 m <sup>2</sup>
Altimetry	15



**QUINTA DE FARO**  
PRIVATE LUXURY VILLAS  
ALGARVE



Cut AA'



Cut BB'

Kitchen equipment is not contractual. Their position is indicative. Dimensions and areas are given subject to technical construction and execution requirements.  
The fallout from false ceilings, soffits and pipes are not systematically shown.  
The thickness of the insulation will be determined by the technical execution study and therefore the data in this plan are only indicative.

Co-Developer :

MJ Développement  
52 avenue du 8 Mai 1945  
64100 BAYONNE- FRANCE  
Tel: +33 5 59 03 13 00

**MJ** DÉVELOPPEMENT  
PROMOTEUR CONSTRUCTEUR

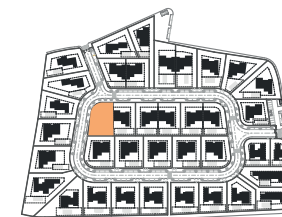
Serip Groupe  
2, avenue de la Liberté  
83120 Sainte-Maxime - FRANCE

  
**SERIP GROUPE**

## SALES PLAN

VILLA N°28 DOUBLE STOREY

SECTIONAL PLAN



**TOTAL INTERIOR LIVING AREA 358.4 m<sup>2</sup>**

**GROUND FLOOR 166.4 m<sup>2</sup>**

Living	40.9 m <sup>2</sup>
Dining room	17.2 m <sup>2</sup>
Kitchen	14.4 m <sup>2</sup>
Office	6.2 m <sup>2</sup>
Storeroom Pantry	5.1 m <sup>2</sup>
Ensuite Bedroom 1	20.5 m <sup>2</sup>
Bedroom 1 Dressing	2.8 m <sup>2</sup>
Ensuite Bedroom 2	26.7 m <sup>2</sup>
Bedroom 2 Dressing	4.4 m <sup>2</sup>
Ensuite Bedroom 3	20.8 m <sup>2</sup>
Guest toilet	1.9 m <sup>2</sup>
Lobby Entrance Hall	5.5 m <sup>2</sup>

**BASEMENT 192 m<sup>2</sup>**

Ensuite Bedroom 4	18.3 m <sup>2</sup>
Ensuite Bedroom 5	20.5 m <sup>2</sup>
Hallway	19 m <sup>2</sup>
Laundry	6.9 m <sup>2</sup>
Gym, Hammam	37.5 m <sup>2</sup>
Wine Cellar	10.1 m <sup>2</sup>
Garage	58.8 m <sup>2</sup>
Technical rooms	20.9 m <sup>2</sup>

**TOTAL EXTERIOR AREA 101.1 m<sup>2</sup>**

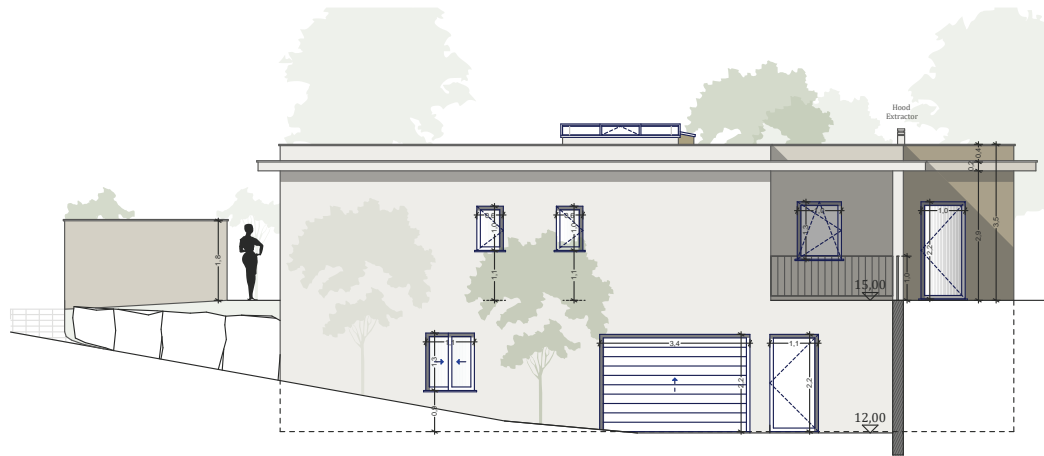
Patio/Fountain	35.7 m <sup>2</sup>
Covered terrace	24.6 m <sup>2</sup>
Pool Deck	4.8 m <sup>2</sup>
Swimming pool	36 m <sup>2</sup>

**TOTAL AREA 459.5 m<sup>2</sup>**

Plot of Land	789.7 m <sup>2</sup>
Altimetry	15



**QUINTA DE FARO**  
— PRIVATE LUXURY VILLAS —  
ALGARVE



South elevation



East elevation

Kitchen equipment is not contractual. Their position is indicative. Dimensions and areas are given subject to technical construction and execution requirements. The fallout from false ceilings, soffits and pipes are not systematically shown. The thickness of the insulation will be determined by the technical execution study and therefore the data in this plan are only indicative.

Co-Developer :

MJ Développement  
52 avenue du 8 Mai 1945  
64100 BAYONNE- FRANCE  
Tel: +33 5 59 03 13 00

**MJ** DÉVELOPPEMENT  
PROMOTEUR CONSTRUCTEUR

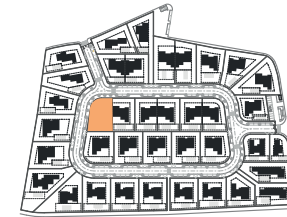
Serip Groupe  
2, avenue de la Liberté  
83120 Sainte-Maxime - FRANCE

  
**SERIP GROUPE**

## SALES PLAN

VILLA N°28 DOUBLE STOREY

ELEVATIONS



**TOTAL INTERIOR LIVING AREA 358.4 m<sup>2</sup>**

**GROUND FLOOR 166.4 m<sup>2</sup>**

Living	40.9 m <sup>2</sup>
Dining room	17.2 m <sup>2</sup>
Kitchen	14.4 m <sup>2</sup>
Office	6.2 m <sup>2</sup>
Storeroom Pantry	5.1 m <sup>2</sup>
Ensuite Bedroom 1	20.5 m <sup>2</sup>
Bedroom 1 Dressing	2.8 m <sup>2</sup>
Ensuite Bedroom 2	26.7 m <sup>2</sup>
Bedroom 2 Dressing	4.4 m <sup>2</sup>
Ensuite Bedroom 3	20.8 m <sup>2</sup>
Guest toilet	1.9 m <sup>2</sup>
Lobby Entrance Hall	5.5 m <sup>2</sup>

**BASEMENT 192 m<sup>2</sup>**

Ensuite Bedroom 4	18.3 m <sup>2</sup>
Ensuite Bedroom 5	20.5 m <sup>2</sup>
Hallway	19 m <sup>2</sup>
Laundry	6.9 m <sup>2</sup>
Gym, Hammam	37.5 m <sup>2</sup>
Wine Cellar	10.1 m <sup>2</sup>
Garage	58.8 m <sup>2</sup>
Technical rooms	20.9 m <sup>2</sup>

**TOTAL EXTERIOR AREA 101.1 m<sup>2</sup>**

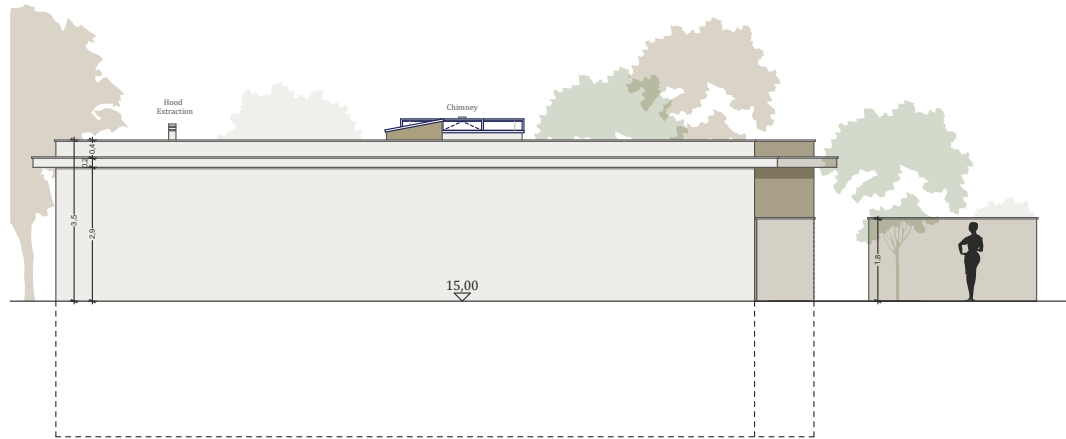
Patio/Fountain	35.7 m <sup>2</sup>
Covered terrace	24.6 m <sup>2</sup>
Pool Deck	4.8 m <sup>2</sup>
Swimming pool	36 m <sup>2</sup>

**TOTAL AREA 459.5 m<sup>2</sup>**

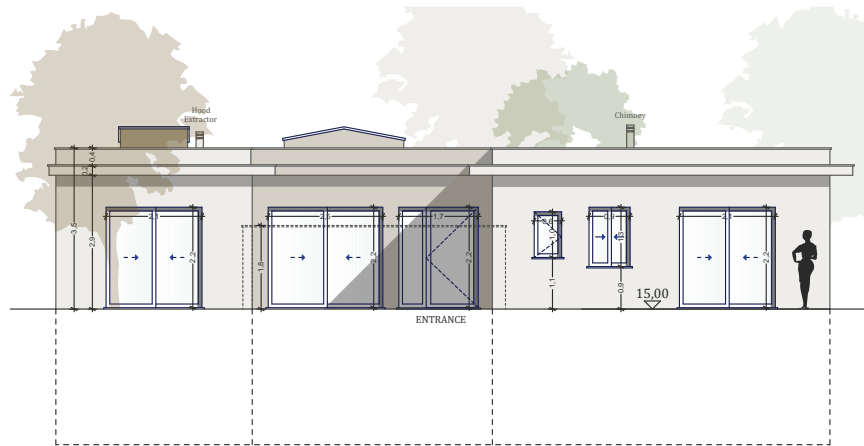
Plot of Land	789.7 m <sup>2</sup>
Altimetry	15



**QUINTA DE FARO**  
— PRIVATE LUXURY VILLAS —  
ALGARVE



North elevation



West elevation

Kitchen equipment is not contractual. Their position is indicative. Dimensions and areas are given subject to technical construction and execution requirements. The fallout from false ceilings, soffits and pipes are not systematically shown. The thickness of the insulation will be determined by the technical execution study and therefore the data in this plan are only indicative.

Co-Developer :

MJ Développement  
52 avenue du 8 Mai 1945  
64100 BAYONNE- FRANCE  
Tel: +33 5 59 03 13 00

**MJ** DÉVELOPPEMENT  
PROMOTEUR CONSTRUCTEUR

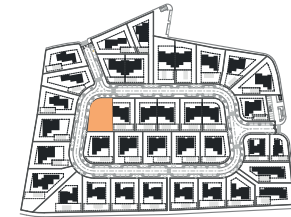
Serip Groupe  
2, avenue de la Liberté  
83120 Sainte-Maxime - FRANCE

  
**SERIP GROUPE**

## SALES PLAN

VILLA N°28 DOUBLE STOREY

ELEVATIONS



**TOTAL INTERIOR LIVING AREA 358.4 m<sup>2</sup>**

**GROUND FLOOR 166.4 m<sup>2</sup>**

Living	40.9 m <sup>2</sup>
Dining room	17.2 m <sup>2</sup>
Kitchen	14.4 m <sup>2</sup>
Office	6.2 m <sup>2</sup>
Storeroom Pantry	5.1 m <sup>2</sup>
Ensuite Bedroom 1	20.5 m <sup>2</sup>
Bedroom 1 Dressing	2.8 m <sup>2</sup>
Ensuite Bedroom 2	26.7 m <sup>2</sup>
Bedroom 2 Dressing	4.4 m <sup>2</sup>
Ensuite Bedroom 3	20.8 m <sup>2</sup>
Guest toilet	1.9 m <sup>2</sup>
Lobby Entrance Hall	5.5 m <sup>2</sup>

**BASEMENT 192 m<sup>2</sup>**

Ensuite Bedroom 4	18.3 m <sup>2</sup>
Ensuite Bedroom 5	20.5 m <sup>2</sup>
Hallway	19 m <sup>2</sup>
Laundry	6.9 m <sup>2</sup>
Gym, Hammam	37.5 m <sup>2</sup>
Wine Cellar	10.1 m <sup>2</sup>
Garage	58.8 m <sup>2</sup>
Technical rooms	20.9 m <sup>2</sup>

**TOTAL EXTERIOR AREA 101.1 m<sup>2</sup>**

Patio/Fountain	35.7 m <sup>2</sup>
Covered terrace	24.6 m <sup>2</sup>
Pool Deck	4.8 m <sup>2</sup>
Swimming pool	36 m <sup>2</sup>

**TOTAL AREA 459.5 m<sup>2</sup>**

Plot of Land	789.7 m <sup>2</sup>
Altimetry	15