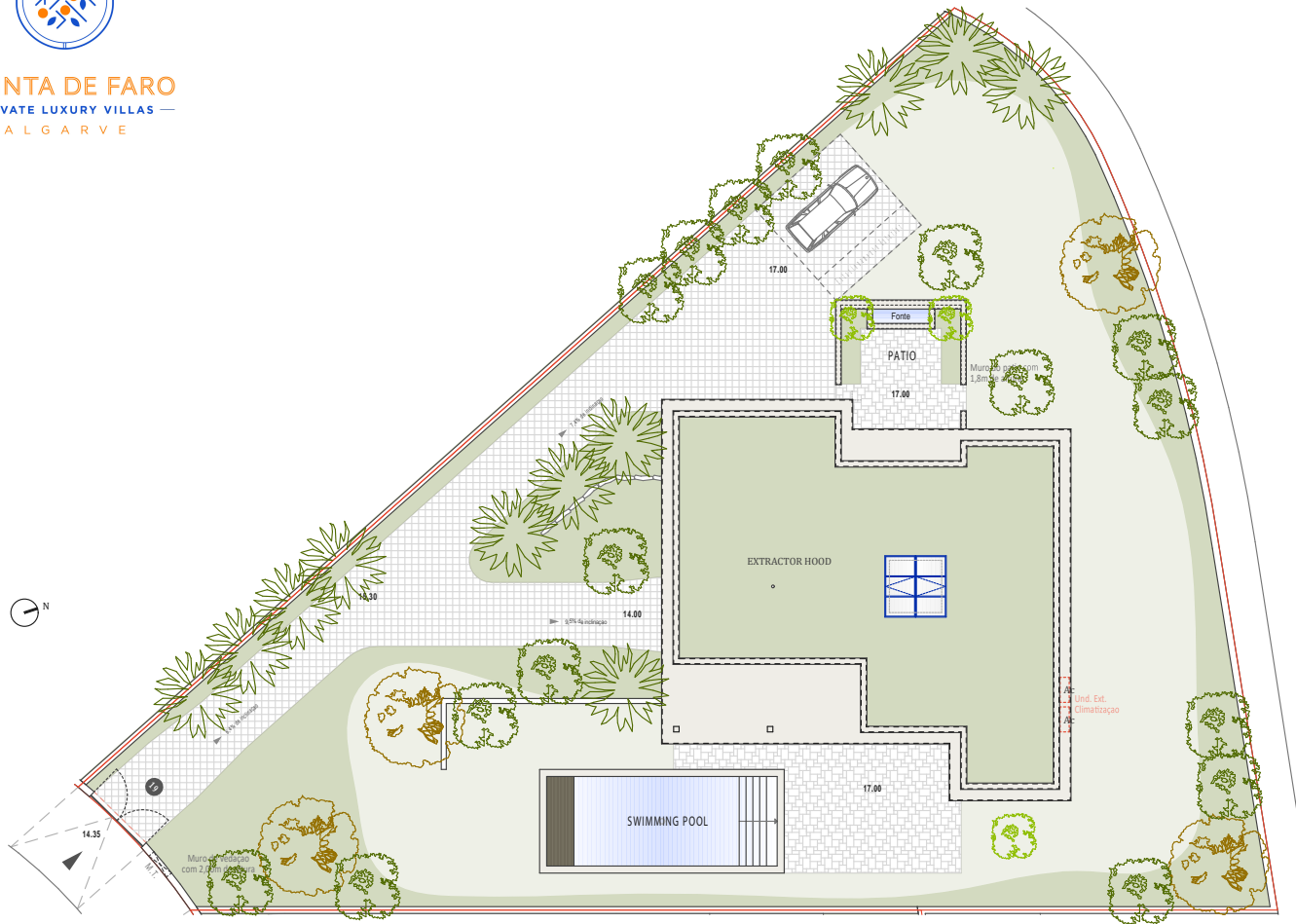




**QUINTA DE FARO**  
— PRIVATE LUXURY VILLAS —  
ALGARVE



Kitchen equipment is not contractual. Their position is indicative. Dimensions and areas are given subject to technical construction and execution requirements. The fallout from false ceilings, soffits and pipes are not systematically shown. The thickness of the insulation will be determined by the technical execution study and therefore the data in this plan are only indicative.

Co-Developer :

MJ Développement  
55 Avenue d'Espagne  
64600 ANGLÈT - FRANCE  
Tel: +33 5 59 03 13 00

**MJ** DÉVELOPPEMENT  
PROMOTEUR CONSTRUCTEUR

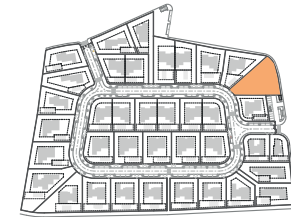
Serip Groupe  
2, avenue de la Liberté  
83120 Sainte-Maxime - FRANCE

  
SERIP GROUPE

## SALES PLAN

VILLA N°19 DOUBLE STOREY

SITE PLAN



**TOTAL INTERIOR LIVING AREA 328.8 m<sup>2</sup>**

**GROUND FLOOR 167 m<sup>2</sup>**

Living	40.9 m <sup>2</sup>
Dining room	17.7 m <sup>2</sup>
Kitchen	14.4 m <sup>2</sup>
Office	6.2 m <sup>2</sup>
Storeroom	5.1 m <sup>2</sup>
Ensuite Bedroom 1	21.2 m <sup>2</sup>
Ensuite Bedroom 2	20 m <sup>2</sup>
Dressing Ensuite Bedroom 2	3 m <sup>2</sup>
Ensuite Bedroom 3	26.7 m <sup>2</sup>
Dressing Ensuite Bedroom 3	4.4 m <sup>2</sup>
Guest toilet	1.9 m <sup>2</sup>
Lobby, Hallway	5.5 m <sup>2</sup>

**BASEMENT 161.8 m<sup>2</sup>**

Hallway	17.2 m <sup>2</sup>
Ensuite Bedroom 4	17.7 m <sup>2</sup>
Laundry	6.9 m <sup>2</sup>
Gym, Hammam	21.6 m <sup>2</sup>
Wine Cellar	10.2 m <sup>2</sup>
Garage	88.2 m <sup>2</sup>
Technical room swim Pool	20.9 m <sup>2</sup>

**TOTAL EXTERIOR AREA 101.1 m<sup>2</sup>**

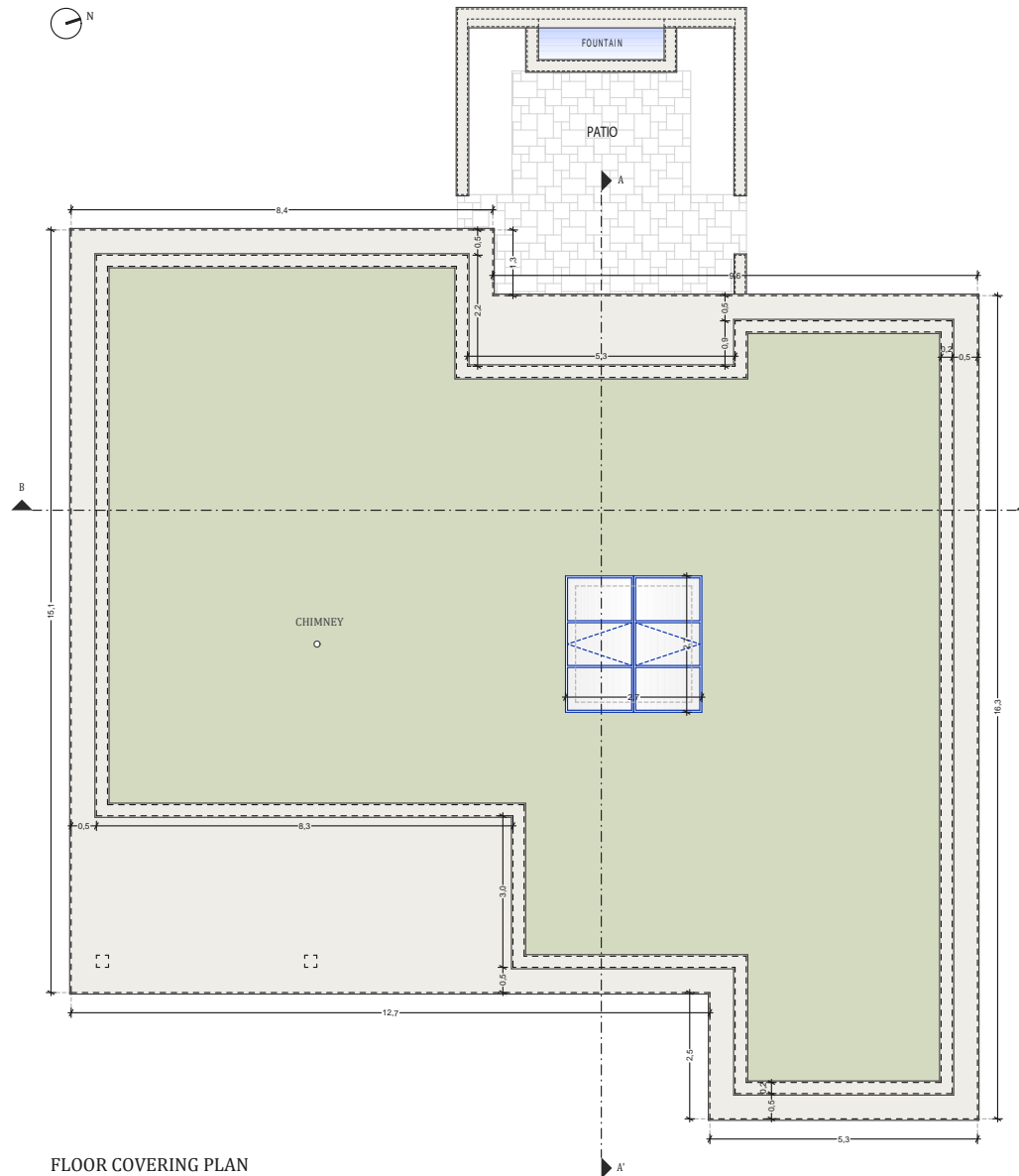
Patio/Fountain	35.7 m <sup>2</sup>
Covered terrace	24.6 m <sup>2</sup>
Pool Deck	4.8 m <sup>2</sup>
Swimming pool	36 m <sup>2</sup>

**TOTAL AREA 429.9 m<sup>2</sup>**

Plot of Land	1250.8 m <sup>2</sup>
Altimetry	17



**QUINTA DE FARO**  
— PRIVATE LUXURY VILLAS —  
ALGARVE



FLOOR COVERING PLAN

Kitchen equipment is not contractual. Their position is indicative. Dimensions and areas are given subject to technical construction and execution requirements.  
The fallout from false ceilings, soffits and pipes are not systematically shown.  
The thickness of the insulation will be determined by the technical execution study and therefore the data in this plan are only indicative.

Co-Developer :

MJ Développement  
55 Avenue d'Espagne  
64600 ANGLET - FRANCE  
Tel: +33 5 59 03 13 00

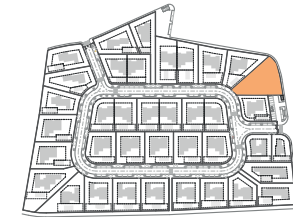
**MJ** DÉVELOPPEMENT  
PROMOTEUR CONSTRUCTEUR

Serip Groupe  
2, avenue de la Liberté  
83120 Sainte-Maxime - FRANCE

  
SERIP GROUPE

## SALES PLAN

VILLA N°19 DOUBLE STOREY FLOOR COVERING PLAN



**TOTAL INTERIOR LIVING AREA 328.8 m<sup>2</sup>**

**GROUND FLOOR 167 m<sup>2</sup>**

Living	40.9 m <sup>2</sup>
Dining room	17.7 m <sup>2</sup>
Kitchen	14.4 m <sup>2</sup>
Office	6.2 m <sup>2</sup>
Storeroom	5.1 m <sup>2</sup>
Ensuite Bedroom 1	21.2 m <sup>2</sup>
Ensuite Bedroom 2	20 m <sup>2</sup>
Dressing Ensuite Bedroom 2	3 m <sup>2</sup>
Ensuite Bedroom 3	26.7 m <sup>2</sup>
Dressing Ensuite Bedroom 3	4.4 m <sup>2</sup>
Guest toilet	1.9 m <sup>2</sup>
Lobby, Hallway	5.5 m <sup>2</sup>

**BASEMENT 161.8 m<sup>2</sup>**

Hallway	17.2 m <sup>2</sup>
Ensuite Bedroom 4	17.7 m <sup>2</sup>
Laundry	6.9 m <sup>2</sup>
Gym, Hammam	21.6 m <sup>2</sup>
Wine Cellar	10.2 m <sup>2</sup>
Garage	88.2 m <sup>2</sup>
Technical room swim Pool	20.9 m <sup>2</sup>

**TOTAL EXTERIOR AREA 101.1 m<sup>2</sup>**

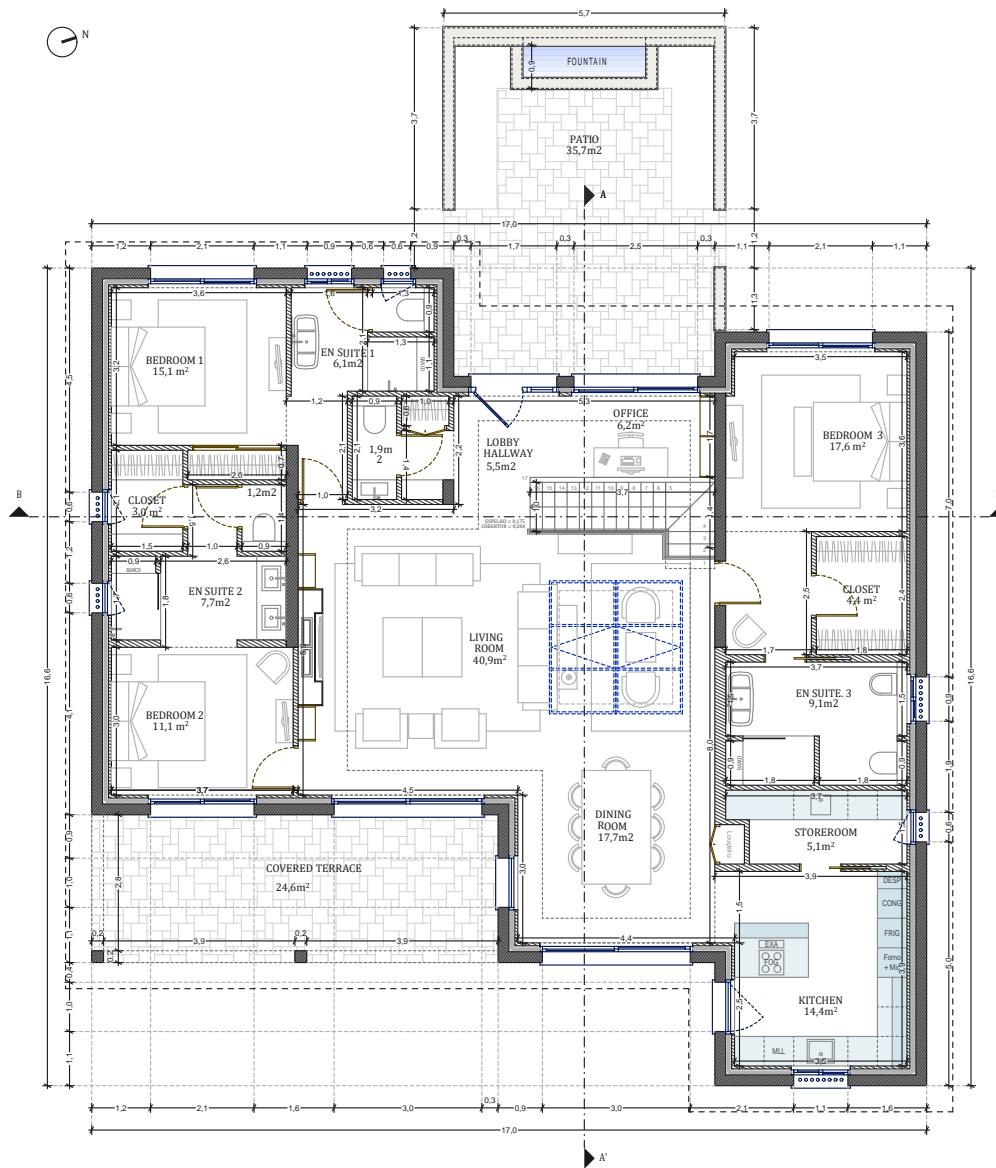
Patio/Fountain	35.7 m <sup>2</sup>
Covered terrace	24.6 m <sup>2</sup>
Pool Deck	4.8 m <sup>2</sup>
Swimming pool	36 m <sup>2</sup>

**TOTAL AREA 429.9 m<sup>2</sup>**

Plot of Land	1250.8 m <sup>2</sup>
Altimetry	17



**QUINTA DE FARO**  
PRIVATE LUXURY VILLAS  
ALGARVE



GROUND FLOOR

Kitchen equipment is not contractual. Their position is indicative. Dimensions and areas are given subject to technical construction and execution requirements. The fallout from false ceilings, soffits and pipes are not systematically shown. The thickness of the insulation will be determined by the technical execution study and therefore the data in this plan are only indicative.

Co-Developer :

MJ Développement  
55 Avenue d'Espagne  
64600 ANGLET - FRANCE  
Tel: +33 5 59 03 13 00

**MJ** DÉVELOPPEMENT  
PROMOTEUR CONSTRUCTEUR

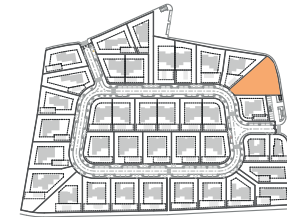
Serip Groupe  
2, avenue de la Liberté  
83120 Sainte-Maxime - FRANCE

  
SERIP GROUPE

## SALES PLAN

VILLA N°19 DOUBLE STOREY

GROUND FLOOR



**TOTAL INTERIOR LIVING AREA 328.8 m<sup>2</sup>**

**GROUND FLOOR 167 m<sup>2</sup>**

Living	40.9 m <sup>2</sup>
Dining room	17.7 m <sup>2</sup>
Kitchen	14.4 m <sup>2</sup>
Office	6.2 m <sup>2</sup>
Storer room	5.1 m <sup>2</sup>
Ensuite Bedroom 1	21.2 m <sup>2</sup>
Ensuite Bedroom 2	20 m <sup>2</sup>
Dressing Ensuite Bedroom 2	3 m <sup>2</sup>
Ensuite Bedroom 3	26.7 m <sup>2</sup>
Dressing Ensuite Bedroom 3	4.4 m <sup>2</sup>
Guest toilet	1.9 m <sup>2</sup>
Lobby, Hallway	5.5 m <sup>2</sup>

**BASEMENT 161.8 m<sup>2</sup>**

Hallway	17.2 m <sup>2</sup>
Ensuite Bedroom 4	17.7 m <sup>2</sup>
Laundry	6.9 m <sup>2</sup>
Gym, Hammam	21.6 m <sup>2</sup>
Wine Cellar	10.2 m <sup>2</sup>
Garage	88.2 m <sup>2</sup>
Technical room swim Pool	20.9 m <sup>2</sup>

**TOTAL EXTERIOR AREA 101.1 m<sup>2</sup>**

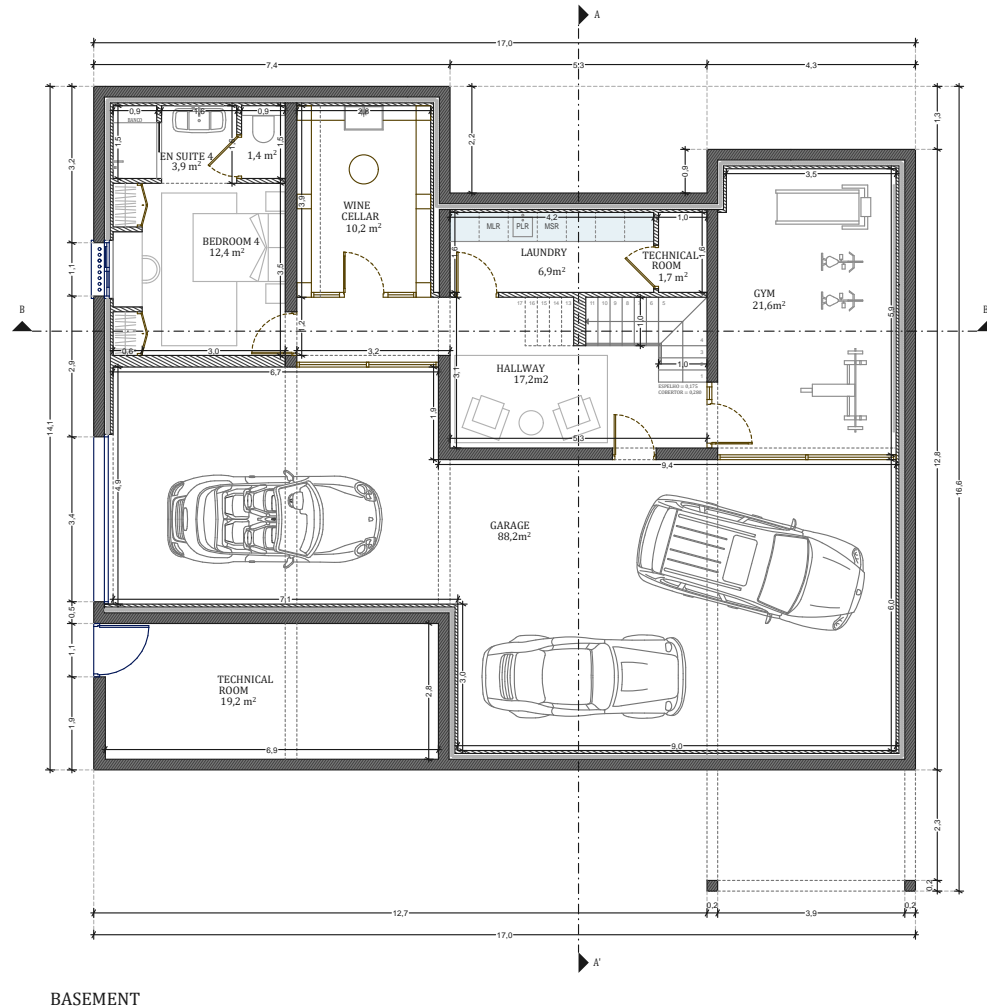
Patio/Fountain	35.7 m <sup>2</sup>
Covered terrace	24.6 m <sup>2</sup>
Pool Deck	4.8 m <sup>2</sup>
Swimming pool	36 m <sup>2</sup>

**TOTAL AREA 429.9 m<sup>2</sup>**

Plot of Land	1250.8 m <sup>2</sup>
Altimetry	17



**QUINTA DE FARO**  
— PRIVATE LUXURY VILLAS —  
ALGARVE



Kitchen equipment is not contractual. Their position is indicative. Dimensions and areas are given subject to technical construction and execution requirements. The fallout from false ceilings, soffits and pipes are not systematically shown. The thickness of the insulation will be determined by the technical execution study and therefore the data in this plan are only indicative.

Co-Developer :

MJ Développement  
55 Avenue d'Espagne  
64600 ANGLÈT - FRANCE  
Tel: +33 5 59 03 13 00

**MJ** DÉVELOPPEMENT  
PROMOTEUR CONSTRUCTEUR

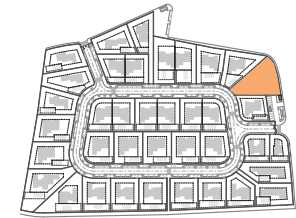
Serip Groupe  
2, avenue de la Liberté  
83120 Sainte-Maxime - FRANCE

  
SERIP GROUPE

## SALES PLAN

VILLA N°19 DOUBLE STOREY

BASEMENT



**TOTAL INTERIOR LIVING AREA 328.8 m<sup>2</sup>**

**GROUND FLOOR 167 m<sup>2</sup>**

Living	40.9 m <sup>2</sup>
Dining room	17.7 m <sup>2</sup>
Kitchen	14.4 m <sup>2</sup>
Office	6.2 m <sup>2</sup>
Storeroom	5.1 m <sup>2</sup>
Ensuite Bedroom 1	21.2 m <sup>2</sup>
Ensuite Bedroom 2	20 m <sup>2</sup>
Dressing Ensuite Bedroom 2	3 m <sup>2</sup>
Ensuite Bedroom 3	26.7 m <sup>2</sup>
Dressing Ensuite Bedroom 3	4.4 m <sup>2</sup>
Guest toilet	1.9 m <sup>2</sup>
Lobby, Hallway	5.5 m <sup>2</sup>

**BASEMENT 161.8 m<sup>2</sup>**

Hallway	17.2 m <sup>2</sup>
Ensuite Bedroom 4	17.7 m <sup>2</sup>
Laundry	6.9 m <sup>2</sup>
Gym, Hammam	21.6 m <sup>2</sup>
Wine Cellar	10.2 m <sup>2</sup>
Garage	88.2 m <sup>2</sup>
Technical room swim Pool	20.9 m <sup>2</sup>

**TOTAL EXTERIOR AREA 101.1 m<sup>2</sup>**

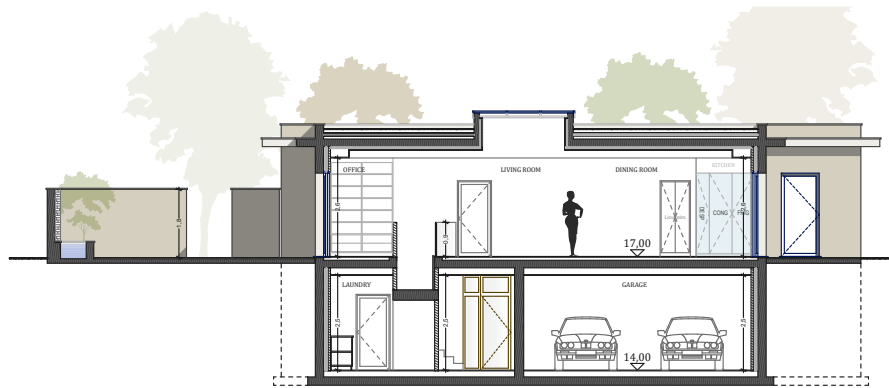
Patio/Fountain	35.7 m <sup>2</sup>
Covered terrace	24.6 m <sup>2</sup>
Pool Deck	4.8 m <sup>2</sup>
Swimming pool	36 m <sup>2</sup>

**TOTAL AREA 429.9 m<sup>2</sup>**

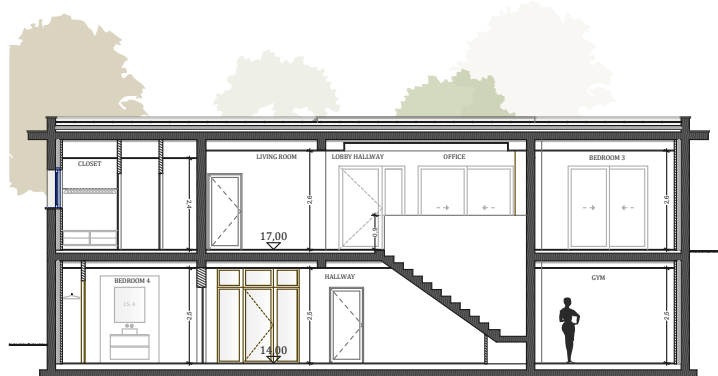
Plot of Land	1250.8 m <sup>2</sup>
Altimetry	17



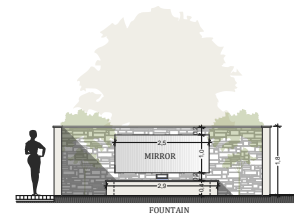
**QUINTA DE FARO**  
— PRIVATE LUXURY VILLAS —  
ALGARVE



Cut AA



Cut BB

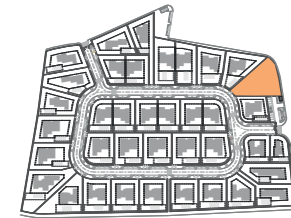


Cut - Patio

## SALES PLAN

VILLA N°19 DOUBLE STOREY

SECTIONAL PLAN



**TOTAL INTERIOR LIVING AREA 328.8 m<sup>2</sup>**

**GROUND FLOOR 167 m<sup>2</sup>**

Living	40.9 m <sup>2</sup>
Dining room	17.7 m <sup>2</sup>
Kitchen	14.4 m <sup>2</sup>
Office	6.2 m <sup>2</sup>
Storeroom	5.1 m <sup>2</sup>
Ensuite Bedroom 1	21.2 m <sup>2</sup>
Ensuite Bedroom 2	20 m <sup>2</sup>
Dressing Ensuite Bedroom 2	3 m <sup>2</sup>
Ensuite Bedroom 3	26.7 m <sup>2</sup>
Dressing Ensuite Bedroom 3	4.4 m <sup>2</sup>
Guest toilet	1.9 m <sup>2</sup>
Lobby, Hallway	5.5 m <sup>2</sup>

**BASEMENT 161.8 m<sup>2</sup>**

Hallway	17.2 m <sup>2</sup>
Ensuite Bedroom 4	17.7 m <sup>2</sup>
Laundry	6.9 m <sup>2</sup>
Gym, Hammam	21.6 m <sup>2</sup>
Wine Cellar	10.2 m <sup>2</sup>
Garage	88.2 m <sup>2</sup>
Technical room swim Pool	20.9 m <sup>2</sup>

**TOTAL EXTERIOR AREA 101.1 m<sup>2</sup>**

Patio/Fountain	35.7 m <sup>2</sup>
Covered terrace	24.6 m <sup>2</sup>
Pool Deck	4.8 m <sup>2</sup>
Swimming pool	36 m <sup>2</sup>

**TOTAL AREA 429.9 m<sup>2</sup>**

Plot of Land	1250.8 m <sup>2</sup>
Altimetry	17

Kitchen equipment is not contractual. Their position is indicative. Dimensions and areas are given subject to technical construction and execution requirements. The fallout from false ceilings, soffits and pipes are not systematically shown. The thickness of the insulation will be determined by the technical execution study and therefore the data in this plan are only indicative.

Co-Developer :

MJ Développement  
55 Avenue d'Espagne  
64600 ANGLET - FRANCE  
Tel: +33 5 59 03 13 00

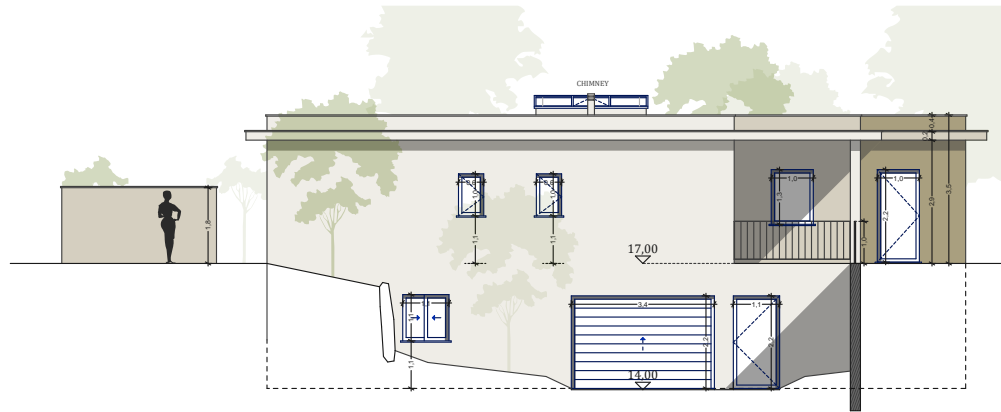
**MJ** DÉVELOPPEMENT  
PROMOTEUR CONSTRUCTEUR

Serip Groupe  
2, avenue de la Liberté  
83120 Sainte-Maxime - FRANCE

  
SERIP GROUPE



**QUINTA DE FARO**  
— PRIVATE LUXURY VILLAS —  
ALGARVE



South elevation



East elevation

Kitchen equipment is not contractual. Their position is indicative. Dimensions and areas are given subject to technical construction and execution requirements. The fallout from false ceilings, soffits and pipes are not systematically shown. The thickness of the insulation will be determined by the technical execution study and therefore the data in this plan are only indicative.

Co-Developer :

MJ Développement  
55 Avenue d'Espagne  
64600 ANGLÈT - FRANCE  
Tel: +33 5 59 03 13 00

**MJ** DÉVELOPPEMENT  
PROMOTEUR CONSTRUCTEUR

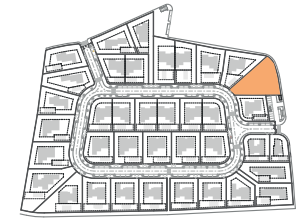
Serip Groupe  
2, avenue de la Liberté  
83120 Sainte-Maxime - FRANCE

  
SERIP GROUPE

## SALES PLAN

VILLA N°19 DOUBLE STOREY

ELEVATIONS



**TOTAL INTERIOR LIVING AREA 328.8 m<sup>2</sup>**

**GROUND FLOOR 167 m<sup>2</sup>**

Living	40.9 m <sup>2</sup>
Dining room	17.7 m <sup>2</sup>
Kitchen	14.4 m <sup>2</sup>
Office	6.2 m <sup>2</sup>
Storeroom	5.1 m <sup>2</sup>
Ensuite Bedroom 1	21.2 m <sup>2</sup>
Ensuite Bedroom 2	20 m <sup>2</sup>
Dressing Ensuite Bedroom 2	3 m <sup>2</sup>
Ensuite Bedroom 3	26.7 m <sup>2</sup>
Dressing Ensuite Bedroom 3	4.4 m <sup>2</sup>
Guest toilet	1.9 m <sup>2</sup>
Lobby, Hallway	5.5 m <sup>2</sup>

**BASEMENT 161.8 m<sup>2</sup>**

Hallway	17.2 m <sup>2</sup>
Ensuite Bedroom 4	17.7 m <sup>2</sup>
Laundry	6.9 m <sup>2</sup>
Gym, Hammam	21.6 m <sup>2</sup>
Wine Cellar	10.2 m <sup>2</sup>
Garage	88.2 m <sup>2</sup>
Technical room swim Pool	20.9 m <sup>2</sup>

**TOTAL EXTERIOR AREA 101.1 m<sup>2</sup>**

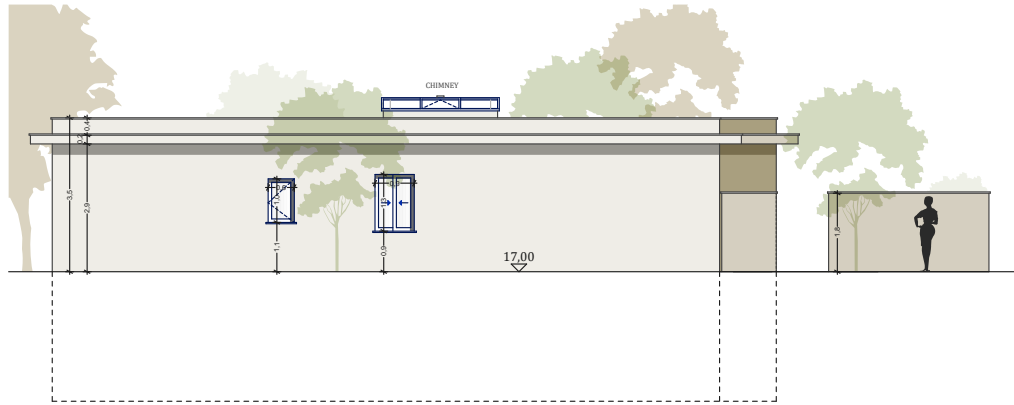
Patio/Fountain	35.7 m <sup>2</sup>
Covered terrace	24.6 m <sup>2</sup>
Pool Deck	4.8 m <sup>2</sup>
Swimming pool	36 m <sup>2</sup>

**TOTAL AREA 429.9 m<sup>2</sup>**

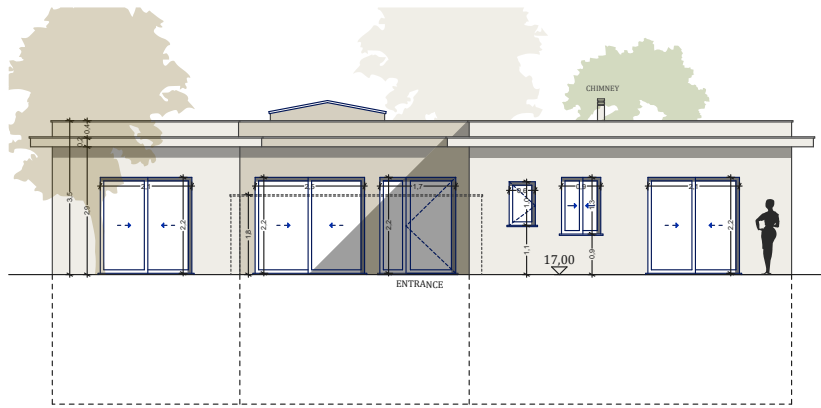
Plot of Land	1250.8 m <sup>2</sup>
Altimetry	17



**QUINTA DE FARO**  
— PRIVATE LUXURY VILLAS —  
ALGARVE



North elevation



West elevation

Kitchen equipment is not contractual. Their position is indicative. Dimensions and areas are given subject to technical construction and execution requirements. The fallout from false ceilings, soffits and pipes are not systematically shown. The thickness of the insulation will be determined by the technical execution study and therefore the data in this plan are only indicative.

Co-Developer :

MJ Développement  
55 Avenue d'Espagne  
64600 ANGLÈT - FRANCE  
Tel: +33 5 59 03 13 00

**MJ** DÉVELOPPEMENT  
PROMOTEUR CONSTRUCTEUR

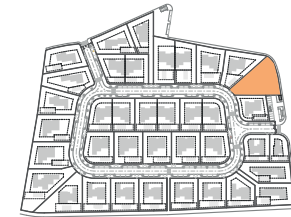
Serip Groupe  
2, avenue de la Liberté  
83120 Sainte-Maxime - FRANCE

  
SERIP GROUPE

## SALES PLAN

VILLA N°19 DOUBLE STOREY

ELEVATIONS



**TOTAL INTERIOR LIVING AREA 328.8 m<sup>2</sup>**

**GROUND FLOOR 167 m<sup>2</sup>**

Living	40.9 m <sup>2</sup>
Dining room	17.7 m <sup>2</sup>
Kitchen	14.4 m <sup>2</sup>
Office	6.2 m <sup>2</sup>
Storeroom	5.1 m <sup>2</sup>
Ensuite Bedroom 1	21.2 m <sup>2</sup>
Ensuite Bedroom 2	20 m <sup>2</sup>
Dressing Ensuite Bedroom 2	3 m <sup>2</sup>
Ensuite Bedroom 3	26.7 m <sup>2</sup>
Dressing Ensuite Bedroom 3	4.4 m <sup>2</sup>
Guest toilet	1.9 m <sup>2</sup>
Lobby, Hallway	5.5 m <sup>2</sup>

**BASEMENT 161.8 m<sup>2</sup>**

Hallway	17.2 m <sup>2</sup>
Ensuite Bedroom 4	17.7 m <sup>2</sup>
Laundry	6.9 m <sup>2</sup>
Gym, Hammam	21.6 m <sup>2</sup>
Wine Cellar	10.2 m <sup>2</sup>
Garage	88.2 m <sup>2</sup>
Technical room swim Pool	20.9 m <sup>2</sup>

**TOTAL EXTERIOR AREA 101.1 m<sup>2</sup>**

Patio/Fountain	35.7 m <sup>2</sup>
Covered terrace	24.6 m <sup>2</sup>
Pool Deck	4.8 m <sup>2</sup>
Swimming pool	36 m <sup>2</sup>

**TOTAL AREA 429.9 m<sup>2</sup>**

Plot of Land	1250.8 m <sup>2</sup>
Altimetry	17